

Wildlife and Countryside Act 1981

Definitive Map and Statement of Public Rights of Way for Oxfordshire

**The Oxfordshire County Council**  
**Byway Open to All Traffic Nos. 12 and 13, Parish of Brize Norton**  
**Definitive Map Modification Order 2019**

This Order is made by the Oxfordshire County Council under section 53(2)(b) of the Wildlife and Countryside Act 1981 ("the Act") because it appears to that authority that the Definitive Map and Statement of Public Rights of Way for Oxfordshire require modification in consequence of the occurrence of an event specified in section 53(3)(c)(i) of the Act, namely, the discovery by the authority of evidence which (when considered with all other relevant evidence available to them) shows-

that rights of way which are not shown in the map and statement subsist or are reasonably alleged to subsist over land in the area to which the map relates, being rights of way such that the land over which the right subsists are a public path, a restricted byway or, subject to section 54A, a byway open to all traffic

The authority has consulted with every local authority whose area includes the land to which the order relates. The Oxfordshire County Council hereby order that:

1. For the purposes of this order the relevant date is 3 October 2019.
2. The Definitive Map and Statement of Public Rights of Way for Oxfordshire shall be modified as described in Part I and Part II of the Schedule and shown on the map attached to the Order.
3. This order shall take effect on the date it is confirmed and may be cited as the Oxfordshire County Council Addition of Byway Open to All Traffic Nos. 12 and 13, Parish of Brize Norton Definitive Map Modification Order 2019.

Dated this *11<sup>th</sup>* day of *November* 2019

**THE COMMON SEAL OF THE OXFORDSHIRE COUNTY COUNCIL**  
was hereto affixed in the presence of:-

*Chris Smith*

County Solicitor/Designated Officer



## SCHEDULE

### PART I Modification of Definitive Map

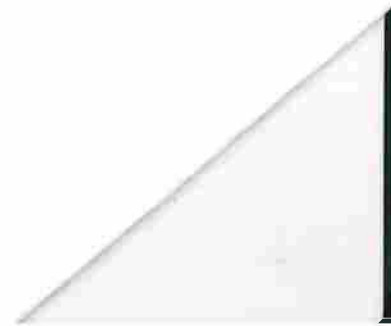
#### Description of path or way to be added

Path Number	Status	Position	Length	Width
12	Byway Open to All Traffic	From its junction with Restricted Byway No 10 in the parish of Minster Lovell at grid reference SP 2990 0990 (Point A on the Order Plan), south for a distance of approximately 144 metres to the northern boundary of the A40 at grid reference SP 2991 0975 (Point B on the Order Plan).	144 metres	6 metres
13	Byway Open to All Traffic	From the southern boundary of the A40 at grid reference SP 2991 0971 (Point C on the Order Plan) south for approximately 1312 metres to its junction with the B4477 at grid reference SP 2998 0840 (Point D on the Order Plan).	1312 metres	6 metres

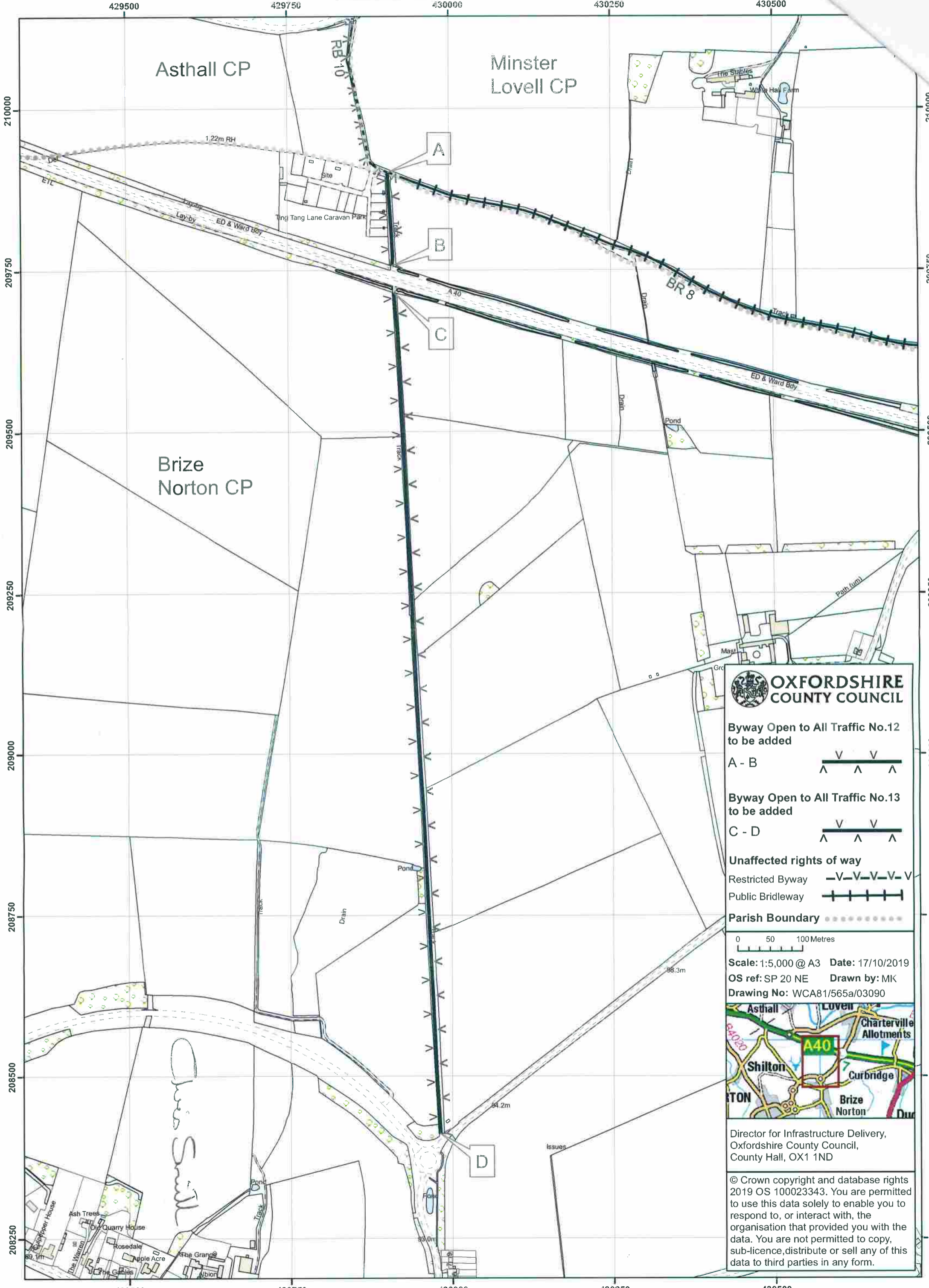
**PART II**  
**Modification of Definitive Statement**  
**Variation of particulars of path or way**

**A new statement for Brize Norton to be added**

<b>Number</b>	<b>Status</b>	<b>Description</b>	<b>Width</b>	<b>Conditions &amp; Limitations</b>
12	BOAT	From Minster Lovell RB10 at SP 2990 0990, S for approx. 144 m to the northern boundary of the A40 at SP 2991 0975.	6 m	
13	BOAT	From the southern boundary of the A40 at SP 2991 0971 S for approx. 1312m to the B4477 at SP 2998 0840.	6 m	



The Oxfordshire County Council, Addition of Byway Open to All Traffic Nos. 12 and 13, Parish of Brize Norton  
 Definitive Map Modification Order 2019



**OXFORDSHIRE COUNTY COUNCIL**

**Byway Open to All Traffic No.12 to be added**  
 A - B

**Byway Open to All Traffic No.13 to be added**  
 C - D

**Unaffected rights of way**  
 Restricted Byway

Public Bridleway

**Parish Boundary**

0 50 100 Metres

Scale: 1:5,000 @ A3 Date: 17/10/2019  
 OS ref: SP 20 NE Drawn by: MK  
 Drawing No: WCA81/565a/03090

Director for Infrastructure Delivery,  
 Oxfordshire County Council,  
 County Hall, OX1 1ND

© Crown copyright and database rights 2019 OS 100023343. You are permitted to use this data solely to enable you to respond to, or interact with, the organisation that provided you with the data. You are not permitted to copy, sub-licence, distribute or sell any of this data to third parties in any form.

Dated

11<sup>th</sup> November

2019

---

---

**The Oxfordshire County Council  
Byway Open to All Traffic Nos. 12 and 13, Parish of Brize Norton  
Definitive Map Modification Order 2019**

---

The **Common Seal of The Oxfordshire County Council** )  
was hereto affixed the        day of        20 )  
in confirmation of the modifications in the within-written )  
Order in the presence of:- )

County Solicitor/Designated Officer