

BRIZE NORTON

Spring to Summer 2025 • Distributed to over 1100 homes & businesses in and around Brize Norton Village

Breeze

Brize Norton Primary School

*Is the school to relocate
to Brize Meadow?*

Beach Bash!

Save the date 6th July and
get your scarecrow ready!

Looking back...
when we turned
2000!

A Keeper becomes

a surrogate Mum at **Cotswold Wildlife Park**
And they win **Best Zoo in the UK!**

You asked...
and now we plan to deliver!

Elder Bank Hall update!

Lisa & her Mam

A HUGE thank you and looking at
gardening through Summer

Stories from RAF Brize Norton

Squadron Leader's feat of endurance,
RAF Podcast and National Pet Month!

Issue

183



Brize Norton Village

BEACH BASH

Sunday 6 July 2025

1pm to 5pm

75

LIVE MUSIC
DANCING
GRAND RAFFLE
LOTS OF STALLS

BBQ • BAR
ICECREAMS
STATIC DISPLAYS
The annual Bash
SCARECROWS
Competition

Celebrating the
150th anniversary
of Brize Norton
Primary School.

TOURS AND DISPLAYS
at the School

WITH THE GENEROUS SUPPORT OF:

AKTIMMS
BUILDERS MERCHANTS

Chancellors

at The Recreation Ground, Brize Norton OX18 3PU

Full information and details of the competitions are available on social media and at www.brizenortonparishcouncil.co.uk - and in the May issue of the Brize Breeze.

REMEMBER NO DOGS ALLOWED ON THE RECREATION GROUND

CONTENTS

Spring to Summer 2025 • Issue 183 • FB: @brizebreeze

ON THE COVER



- **PAGE 6:** The uncertain future of our Village School



- **PAGE 15:** You asked.. plans for renovation of the rec...



- **PAGE 15,22,37:** A few stories from RAF Brize Norton



- **PAGE 19:** An Elder Bank Hall, long awaited update!



- **PAGE 24:** A HUGE thank you... then onto Gardening



- **PAGE 27:** 25 years since the Millenium Celebrations!

Welcome to issue 183 of the
BRIZE NORTON
Breeze



Credit: Philip Joyce

- **PAGE 36:** Jenni becomes Elvis' Surrogate Mum!

PRODUCTION TEAM

- Jayne Woodward – Editor & Designer
- Richard Tilley – Designer
- Jane Hornsby – Photography

TO ADVERTISE, SEND AN ARTICLE, RECIPE OR PHOTO FOR THE NEXT ISSUE

- Contact Jayne:
✉ jayne@chapelhillgroup.co.uk
f @brizenortonbreeze
☎ 07810 255 000



deliver a consistent message to our Councils. It also gives us the opportunity to discuss any impacts that may occur across the whole sub-area.

We are also working with Carterton Councillor Simon Watson, who is a 'Super User' and is able to request road repairs direct to OCC's contractor rather than us having to use Fix My Street. As you will have noticed, numerous pot holes have already been repaired on Station Road. It is a process that seems to work – thank you Simon. However, if anyone would like to become a 'Super User' for Brize Norton, please let our Clerk know.

The War Memorial outside St Britius Church has the names of 18 men and boys who made the ultimate sacrifice during WWI engraved on it.

There were also two men who gave their lives in WWII. However, only the name of Flying Officer John Millis, appears on the memorial. The Parish Council is proud to announce that the name of Corporal David Price has now been engraved on the memorial. His grave is in the churchyard opposite the memorial.

There was a service to remember these two men at the memorial on 8th May.

Thank you to all who attended our Annual Parish Meeting in the Elder Bank Hall on 13th May. I hope you found the information presented by the Parish Council, County and District Councillors, and local organisations interesting.

The next community meeting to be held in the Elder Bank Hall relates to the future of our

Primary School. There is more information about this elsewhere in the Brize Breeze.

On a final note, I would like to thank Ady State for all his hard work whilst on the Parish Council. He has now decided to retire and focus on his owl boxes, which are spread around the county. However, he will still continue to be involved and advise us on biodiversity topics and remain on the Public Art Committee. I also would like to welcome Emma Jackson, who is a resident of Brize Meadow, onto the Parish Council.

I look forward to meeting many of you around the village or in the café.

To contact Les (Chairman) email clerk@brizenortonparishcouncil.co.uk

Les Goble

Welcome to this latest edition of the Brize Breeze

It was fantastic to see all the different junior teams from Aston Football Club playing on our recreation ground. A huge thank you to Councillor Wendy Way for liaising between Brize Norton Parish Council and Aston Football Club and making all the arrangements to make this happen. Hopefully, one day, we will be able to watch a Brize Norton junior team playing at home.

Now that we are entering the warmer, longer days, the Parish Council looks forward to watching Minster Lovell Cricket Club

playing on our recreation ground.

I would like to take this opportunity to thank the 100-plus residents who attended the meeting in the Elder Bank Hall where we discussed the planning application for 350 houses at Kilkenny Farm and for submitting over 100 letters of opposition along with the Parish Council's response. Your Parish Council will watch how this application progresses very carefully.

With Unitary Authorities being planned, we await to see if Oxfordshire will become one large authority or if it will be divided up and joined with authorities in other regions. No matter how our own authority will be decided, there will ultimately be more responsibilities for Town and Parish Councils.

“The War Memorial outside St Britius Church has the names of 18 men and boys who made the ultimate sacrifice”

This is perfect timing for the completion of our Elder Bank Hall extension, which comprises of an office, meeting room, and accessible toilet. With the Council having to arrange more and more meetings, this will be a much-used facility. We have also received numerous requests from third parties to hire this room. As part of this project, the Elder Bank Hall committee have created a new accessible toilet for users of the main hall.

We are pleased to announce that we are working collaboratively with Carterton Town Council and Shilton Parish Council to form a 'Local Plan Working Group'. This will ensure that developers



Hickman Brothers' Landscapes Ltd

01993 822226

Local Garden & Landscape Supplies

Our friendly and knowledgeable staff are always happy to help with all your garden projects & requirements
Aggregates, Topsoil, Compost, Fencing, Slabs, Tools & much more
We have a great range of Trees & Shrubs
and a fantastic range of Olive Trees

COME AND VISIT OUR NURSERY & STORE



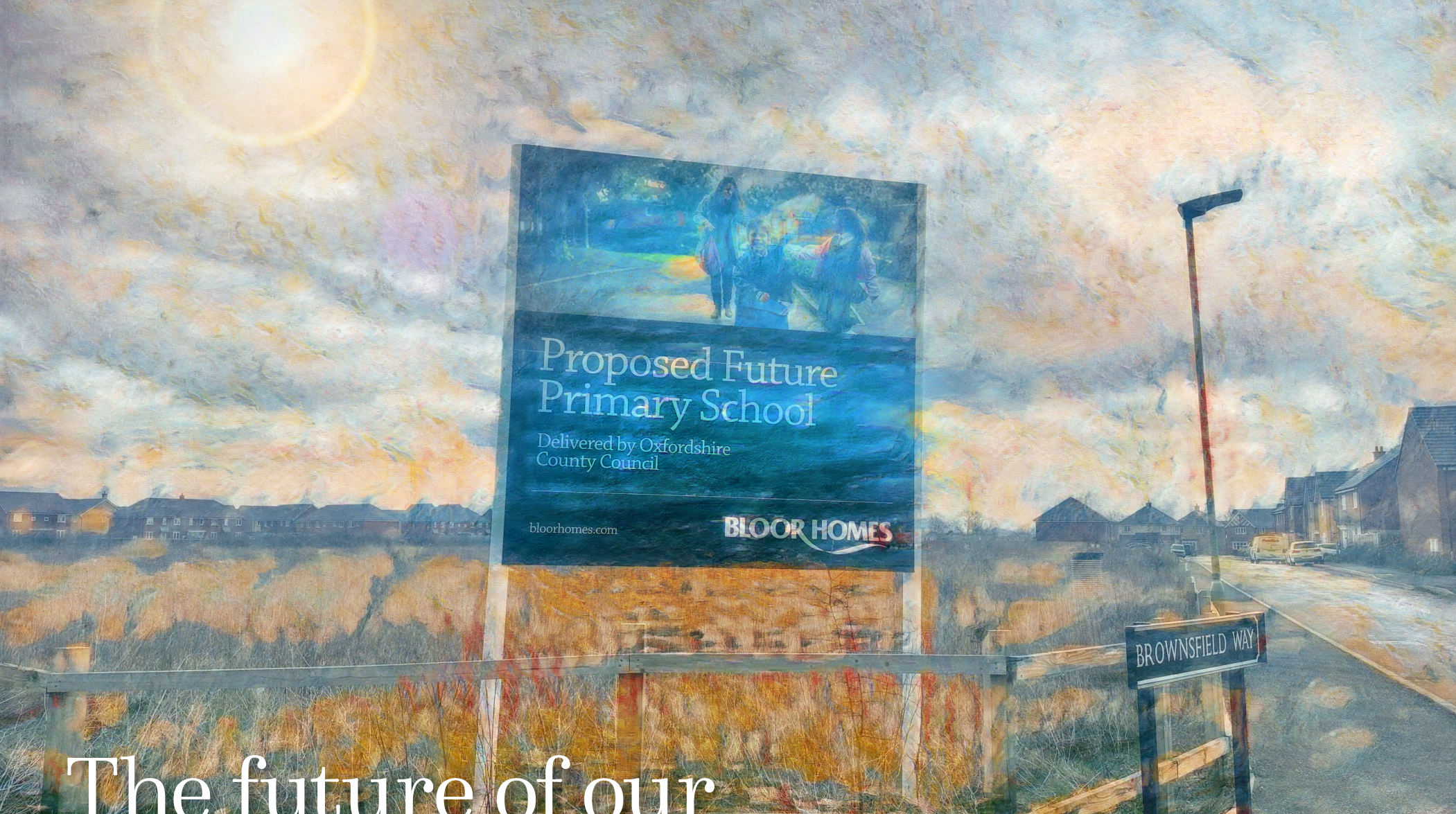
Plant Hire & Skips



Logs, Coal & Kindling







The future of our Village School...

Investing in the future of education in Brize Norton – consultation

A new school building planned for Brize Meadow may become a new home for Brize Norton Primary School, following a proposal by

Oxfordshire County Council (OCC) and Oxford Diocesan Schools Trust (ODST).

Demographic information suggests young families are increasingly likely to live in the Brize Meadow area and, given the strengths of the current Brize Norton school and the strong education it offers, OCC and ODST propose to invest in the current provision and relocate it into the brand-new premises.

A consultation period opened on 12th May and runs until 23rd June.

ODST – the multi-academy trust that the school belongs to – has

provided some information about why and how the relocation might take place, and how to have your say:

Why might Brize Norton school relocate?

Brize Meadow is in Brize Norton parish and in Brize Norton Primary School's catchment area, with an increasing number of school families living there.

Modern facilities and space will mean potential for a bigger hall, sports facilities, performances, the school's own playground equipment, and much-needed

evolving to meet changing needs in the area.

Section 106 funding for the new school building is ring-fenced by the housing developers exclusively for education provision at Brize Meadow. This is an opportunity to gain this investment for Brize Norton Primary at a time when school funding is very stretched, extending the high-quality education already provided and securing the school's future.

Key information

The move is likely to happen during the 2027-28 academic year, at the earliest. All pupils on roll at the time will remain on roll.

The PAN (Published Admissions Number) – the number of pupils admitted in Reception – would increase from 20 to 30, beginning only with Reception admissions following relocation. Current

“Modern facilities and space will mean potential for a bigger hall, sports facilities, performances, the playground equipment, and much-needed SEND provision”

SEND provision that the current building cannot accommodate.

A sustainably-built new home for the school means less spending on maintenance of an old building, and more money to education.

If a second school was built to serve Brize Meadow instead, it is likely that demand for the current Brize Norton school would drop significantly, making the school's future uncertain. Relocating is an opportunity to retain the current school community of staff and children, and the ethos and values of the school, while

classes are likely to remain as they are (20 per year group, in mixed-year classes of 30.)

The school leaders and staff would lead the day-to-day aspects of a transition, ensuring the high-quality education and family feel of the school is retained.

Have your say

OCC and ODST are very committed to listening to the views of parents, carers and the local community. A formal consultation period runs until

23rd June. Questions received will be collated, summarised and responses published online following the consultation period.

Read the consultation information and send us your feedback:

Find the full consultation information, presentation from the 22nd May meeting, and the feedback form at www.odst.org.uk/consultation or use the QR code below. Alternatively you can email us at odst.consultations@oxford.anglican.org

**There is a
CONSULTATION
DROP-IN EVENT
ON 19TH JUNE.**

**Join us at
Elder Bank Hall
between
5pm-7pm**

**to find out more and
share your thoughts
in person.**

**You can find out
more at
www.odst.org.uk/consultation**



For and against in...

A Moving Debate

FOR: A practical path to give our children the best start in life

For generations, the old village school has stood at the heart of our community – a familiar and much-loved presence, rich in memories and tradition. Its red-brick walls have echoed with laughter, learning, and lifelong friendships.

But while our affection for the building is undeniable, we must also look ahead – with clear eyes and steady hands – at what's best for our children, their education, and our growing community.

The truth is: our village has changed. The new housing estate has brought hundreds of families into the area. The majority of pupils now come from this side of the village.

The demands on the school have grown, but the old site hasn't. The facilities, despite their charm, are cramped and outdated. Classrooms are repurposed spaces; outdoor play areas are limited; parking and access are difficult, especially for families commuting from the newer developments.

The proposed relocation isn't about abandoning the past – it's about meeting the needs of the present, and preparing for the



future.

A purpose-built, modern school on the edge of the village offers:

- Spacious, fully accessible classrooms
- State-of-the-art technology and resources
- Safer drop-off and pick-up areas
- Greater outdoor space for play, sport, and learning

It also offers teachers the chance to teach in facilities that support 21st-century education, not 19th-century layouts. And it gives parents a setting that reflects our commitment to investing

“ We have a unique opportunity to shape something extraordinary for our children and grandchildren ”

in the next generation—not just preserving the last.

We understand the emotional pull of the old school. We, too, have memories there. But nostalgia alone cannot outweigh the real, practical benefits of a new site that can accommodate all year groups effectively and safely under one roof.

The proposed idea to split the school across two sites may seem like a compromise, but in practice, it brings serious concerns:

- Higher staffing and operational costs
- Logistical complexity for families with children in different years
- Greater challenges for safeguarding and transitions between stages
- Dilution of community identity within the school itself

Rather than stretching limited funds to keep an old building

barely fit for purpose, let's focus our investment where it matters most: delivering excellent education in a space designed for today's learners.

And the old building? Let's not frame its future as bleak. Instead, let's reimagine it – as a vibrant community hub, a preschool, a local arts centre, or a village heritage site. Let's honour its legacy, not by clinging to what it was, but by giving it a new life that still serves us all.

This isn't about letting go. It's about reaching forward.

We have a unique opportunity to shape something extraordinary for our children and grandchildren – an environment that reflects our aspirations, not just our history.

Let's build a future that's worthy of their dreams. Let's move forward – together.

AGAINST: Let's keep the heart of the village beating

For 150 years, our village school has stood quietly and proudly at the centre of daily life. Generations of children have passed through its red-brick halls, not just to learn, but to grow, play, laugh and belong.

But now that chapter could be coming to a close.

Plans are moving forward to relocate pupils and staff to a brand-new school on the edge of the village – a sleek, modern facility near the new housing estate. On paper, it looks like progress. More space. State-of-the-art resources. A fresh start.

But many of us are left wondering



Picture Courtesy of Fred Bellenger

“ We can protect this precious place, honour its history, and make sure it continues to serve the village as it always has ”

– at what cost?

The old school isn't just a place for lessons. It's where children play football near the café on sunny days, sharing ice creams and giggles. It's where mums and dads catch up on the sidelines, and where, in the colder months, little ones gather indoors to draw, build jigsaws, and feel safe and seen.

It's a living, breathing part of village life – woven into the fabric of who we are.

While it's true that most pupils now come from the new estate, this doesn't have to mean leaving the old school behind. Instead, many in the community are calling for a simple and meaningful compromise: keep the old school in use as an infant school, for pre-school, reception and Year 1. There's enough space. The building is in good condition. And any shortfall in funding could be met together – with local support, grants, and even a bit of good old-fashioned fundraising.

This would allow the planned £8–10 million to be focused on

building a fantastic junior school – rather than trying to stretch it thinly across every year group.

More importantly, it would keep the school – our school – right where it belongs.

We've all seen what happens to heritage buildings when they're no longer in use. They're turned into flats, left to fall into disrepair, or sold off. We can do better. We can protect this precious place, honour its history, and make sure it continues to serve the village as it always has – for the next generation and beyond.

This isn't a fight against change. It's a stand for identity. For community. For character. And for our children.

Let's not allow the school bell to fall silent. Let's come together to keep the heart of our village beating.



Around Our Village



St Britius Church

Carolyn Peach



We are pleased to write that the Reverend Barry Hanson was invited to be the Rector of the Benefice of Brize Norton, Carterton and Black Bourton.

On 9th April his Induction service held at St John's Church, Carterton was led by Bishop Gavin of Dorchester and attended by members of the congregations of the Benefice, by Barry's family and friends, by representatives of the Patrons, Christ Church college and Eton College and by the Deputy Lord Lieutenant for Oxfordshire, Julian Sayers.

Reverend Barry will be working with our Lay Minister Lyndsay Baker and youth and community

minister Wend Smith. Wend has taken on responsibility of children's ministry work following the retirement of Gary Long.

Following discussion with the Parish Council we have reached an agreement on the grass cutting of the open and closed churchyards.

We are indebted to the PC that they have reviewed their position of last year and now able to make a grant towards the grass cutting of the open churchyard and will continue to include the closed churchyard grass cut in the village contract. We very much appreciate the support we have received in the maintenance of these invaluable village assets.

Please, if you are tending graves, adhere to the signage on the waste recycling bins when disposing of green garden waste and other wrappings and waste to assist in keeping the area tidy and facilitate the disposal of rubbish.

We look forward to raising funds whilst supporting the village National Garden Scheme open garden day on **Sunday 22nd June**; from 1pm to 6pm you are welcome to the Elder Bank Hall for tea and cakes even if you are unable to visit the gardens. Our beautiful Norman Church will also be open. Why not visit to learn a little more of the history on our display boards? Another fundraiser will be our stall

at the Village Bash on Sunday 6th July.

In the last couple of months we have welcomed families and friends of two children presented for baptism and couples who have visited to hear their marriage banns read.

If you would like to arrange a baptism please contact Rossie Sewell, our churchwarden (01993 843418) or to plan another special ceremony at St Britius please contact Rev Barry Hanson (07949 654988, rector@bncbb.org.uk).

You are welcome to join in our weekly fellowship Pilgrim's Lunch each Tuesday lunchtime from noon to 1pm. Contact Phil (01993 843856) for more information.

As well as our 9.15am Sunday service, there is also a weekly Wednesday evening Holy Communion service at 7pm. The Church is open until dusk on Sundays following the morning service. Please do visit to take the time for quiet reflection in our beautiful Norman church.

For any further details of the church services refer to the notices on the church door or log onto www.bncbb.org.uk where you can also gain information of services at St John's, Carterton and St Mary's, Black Bourton.

If you have any queries or need help and support then please do contact a member of the team:

- **Rector:** Rev Barry Hanson 07949 654988 rector@bncbb.org.uk (Friday day off)
- **Churchwarden:** Dr Phil Holmes 01993 843856 p.holmes@brizenorton.org
- **Churchwarden:** Rosalind Sewell 01993 843418 rossie.sewell@gmail.com

For any further details of the church services refer to notices on the church door or go to bncommunity.org

Brize Norton Primary School

Robyn Jones - Headteacher

This year is a special year for us – it sees us celebrate our 150th year as a primary school here in Brize Norton village.

The village school was built by Joseph Timms with stone from his family’s quarry. Designed in picturesque Tudor Gothic style, with rock-faced stone walls and a red clay-tiled roof, the school opened in 1876, on the 8th May.

It was planned with a large schoolroom linked to the teacher’s house by a smaller room. There was room for three classes in the schoolroom and infants could meet in the other room.

Numbers on roll were initially low: in 1878 only an average of 15 children attended who were taught by one schoolmaster.

Although seeing fluctuating numbers, the school has steadily grown. In 1939–40 the school was joined by 37 evacuees and three schoolmasters from East Ham (London).

After the Second World War, despite the emigration of agricultural workers, numbers rose as Brize Norton airbase was developed.



Over the years, and with the expansion of the school, the school continues to thrive and educates up to 140 children from the local village and surrounding areas.

Approximately 25% of children are from service families so our links with the RAF Base are strong.

As we have now entered our 150th year, we have lots of celebratory activities planned with the children and parents which will culminate in a birthday party on 8th May 2026.

This term, the children are taking part in a colour run on the recreational ground to fundraise towards the school’s up and coming celebrations.

In July, we are holding a family festival for the children and parents of the school; we will also

be opening our doors on the day of the Village Bash for the local community and past members of the Brize Norton Primary School family to come and have a look around.

We have other events lined up for the children such as a Victorian day, a street party as well as projects within our history curriculum focusing on local history. We have also invited an artist to come and work with the children on a celebratory mosaic plaque which will mark the occasion for years to come.

We are very much looking forward to celebrating the school’s milestone and marking the event for the children and families.

We are also keen to learn about what the school was like here over the years. If you have any links with the school from its past, or know anyone who has, please do get in contact with the school’s office.

We would welcome anyone who is happy to talk to the children and share their insight into what it was like to be a part of the school in its former years.

To contact
Brize Norton Primary School,
visit their new website at
www.brizeprimary.org



Jackie Hampson

It’s been a busy few months with lots going on. We’ve had the lovely Anna bring ‘Little City’ to preschool.

Last term we once again successfully hatched ten little chicks.

Just before we broke up for the Easter holidays Chloe’s Mobile Farm returned to preschool with Norman the donkey, Gatsby the lamb and some very cute little bunnies. The children love visits from Chloe and her animals.

This term the children are learning all about life cycles. We are looking at plants, frogs, butterflies and for the first time this year we’ll be looking at the life cycle

of ducks. so it will be exciting to have some little ducklings at preschool for a few weeks.

We’ve lots planned for the children in the coming months. Chef Mike, from The Angel in Burford will be coming in for our annual ‘Big Lunch’ where we all sit down for a hot lunch cooked by Mike, and the children prepare dessert.

We have visits planned over the coming weeks from Crocodiles of the World, Crazy Colin the magician and we continue with our weekly Karate lessons run by Tom from Oxford Sport and Traditional Martial Arts.

We’ve been lucky enough to receive a donation from Annington Homes, who are renovating properties to rent on Netheravon. The money is

being spent on new water play resources for the children which should arrive very soon. We are extremely grateful for their kind donation.

We are holding open afternoons on the 6th and 20th June from 1pm–2.30pm for anyone looking for a preschool place from September 2026. All places have been allocated for this coming September to July 2026.

If you’d like to come along please contact us on 07769 617696 or email us on brizenortonpreschool@hotmail.co.uk

To contact Brize Norton Pre-School about places, open days or registration,
Text/WhatsApp: 07769 617696
brizenortonpreschool@hotmail.co.uk
www.brizenortonpreschool.co.uk



The football season has come to an end, and during that time, our recreation ground has witnessed numerous football games played by various youth teams from Aston, ranging from the U7 (5 a-side) to the U17 Girls (11 a-side). These matches have brought much joy and sportsmanship to our community.

We are thrilled to announce that the Minster Lovell Men's 3rd team is returning for another season of cricket in the Cherwell League.

They will play all their 'home' games here at our ground.

We are also hopeful that we will be able to host some youth county games here as well.

We are confident that the Minster Lovell Men's 3rd team would greatly appreciate any support from cricket enthusiasts in our community.

Let us come together to celebrate the end of a fantastic football season and embrace an exciting cricket season.

Your support and enthusiasm make a significant difference, and we look forward to seeing you at the matches.

Home Fixtures (1pm start):

- 21 June vs East and West Hendred CC 2nd XI
- 5 July vs Abingdon Vale CC 3rd XI
- 12 July vs Kingston Bagpuize CC 3rd XI
- 26 July vs Dorchester on Thames C 2nd XI
- 2 August vs Steventon CC 2nd XI
- 26 August vs Bampton in the Bush CC 3rd XI
- 30 August vs Grove CC 2nd XI



Minster Lovell Cricket Club





Sign up now for the new season!

Why Join Minster Lovell Cricket Club?

All Stars Cricket (Ages 5-8) – A fun introduction to cricket for young boys and girls.

Dynamos Cricket (Ages 8-11) – Exciting, game-based sessions for young cricketers.

Youth Cricket, both friendly and competitive options for boys and girls (u11s, u13s, u15s, u17s, u19s).

Lions – Inclusive Disability Cricket – Our welcoming, supportive team (all ages welcome!).

Senior Teams – Competitive and social cricket for all abilities.

Three senior teams and a Sunday friendly team

Be part of a welcoming community with a strong social scene.



Senior Cricket contact – Olly Mersh
info@minsterlovellcricket.co.uk

Youth Cricket contact – Chris Jones
youth@minsterlovellcricket.co.uk

Playing at
Minster Lovell
and Brize Norton

You asked...
and now we plan
to deliver!

Cllrs Wendy Way &
Carol Fothergill

With the success of the new play park at Brize Meadow, the Parish Council has taken a progressive step towards enhancing community spaces by focusing on the refurbishment of the existing play park at the recreation ground on Station Road.

This initiative aims to revitalise the area, making it more appealing and accessible for families and children.

One of the exciting prospects under consideration is the **transformation of the existing tennis court into a Multi-Use Games Area (MUGA)**. The goal is to make the court versatile enough to accommodate various sports such as football, basketball, and other activities, thereby fostering a broader range of physical engagements within the community.

Safety is paramount when it comes to children engaging in activities or playing sports, especially contact-based sports. MUGA pitches are specifically designed to minimise impact and reduce the risk of injuries from falls or collisions. This thoughtful design ensures that children can enjoy their playtime with a lower risk of harm, promoting a safe and healthy environment for physical activity.

In order to ensure that the refurbishment and conversion meet the community's

expectations and needs, BNPC has sought preliminary design ideas from a playpark consultant. Following this, a consultation will be held in the Elder Bank Hall. This meeting will provide a platform for community members to voice their opinions and contribute to the decision-making process, ensuring that the final outcome aligns with the collective vision of the residents.

Refurbishing the existing play park and converting the tennis court at Station Road into a MUGA represents a significant step towards enriching the recreational facilities in the area.

By prioritising safety and involving the community in the planning process, the Parish Council demonstrates its commitment to creating a vibrant and inclusive environment for all.

This initiative not only enhances physical activity opportunities but also strengthens community bonds, making the recreation ground a hub of joyful and safe recreation.

To contact Wendy or Carol, email
w.way@brizenortonparishcouncil.co.uk
or c.fothergill@brizenortonparishcouncil.co.uk

Squadron Leader's
feat of endurance
for stroke charity

Huge congratulations to our very own Squadron Leader Stu Masters who completed the gruelling London Landmarks Half Marathon on Sunday 6th April in aid of Different Strokes Charity.

Different Strokes helps younger stroke survivors and their families to achieve an active recovery throughout their lives.

Squadron Leader Masters said: "After suffering a major stroke in 1997, and a more minor stroke in 2021, I relied heavily on Different Strokes for sharing information and experiences of strokes. One thing I realised is that I am very lucky to be able to run, even at the age of 58; many stroke survivors can't, therefore I'm also running for them."

Different Strokes have personal experience of life after stroke. Most of their staff, volunteers and trustees are stroke survivors, family members, or have a close personal connection to stroke.

Different Strokes recognise that younger stroke survivors and family members are the experts in stroke recovery and rehabilitation; consulting with them regularly to make sure that Different Strokes services are relevant and personalised.

You can find out more by visiting:
www.differentstrokes.co.uk



What's on...



The Brize Norton Beach Bash is just around the corner!

Come and join us on the village recreation ground on Sunday 6th July for a family-fun, community gathering.

The event is run by volunteers from village charities – with the proceeds primarily going to Brize Norton Primary School, St Britius Church and the Brize Norton Village Pre-school, but also supporting other local charities and businesses.

Our theme celebrates the **'FUN OF THE SEASIDE'** and the **75TH ANNIVERSARY of the VW Camper van** in production.

We would like for everyone to get involved prior to the day by making a themed scarecrow and, if possible, to display it in your garden from Sunday 22nd June to

advertise the event. Then, bring your scarecrows on the day to be judged and possibly win a prize.

To mark the 150th anniversary of its opening, the village school it will be open for tours and have a display of photos and memorabilia during the afternoon. We would welcome photos and items for display – please contact the school on 01993 842448 or by email at office.2250@brize-norton.oxon.sch.uk if you can help. Why not come along and catch up with friends old and new whilst enjoying our afternoon's entertainment?

The fun starts at 1pm.

We will have the usual stalls; raffles, tombolas, bric-a-brac, plants, cakes, bar, barbecue, year 6 games, bouncy castles and tea and cakes at the Humble Bumble café. We are planning other static displays, an obstacle race and musical entertainment and all the fun of a village fayre.

AKTIMMS
BUILDERS MERCHANTS

Chancellors

We are indebted to our current sponsors, A K Timms and Chancellors, for their

financial support and assistance in putting on the event, and we are looking to other local businesses to join them.

Look out for posters on the village noticeboards and for more information and updates on the village social media.

We would always welcome more volunteers to help before and on the day – please contact us by social media or contact Carolyn on 07786 405341.

The event will run from 10am to 5pm. Put it in your diary.



SCARECROW COMPETITION RULES

Brize Norton Village Beach Bash 2025 welcomes entries from residents and those living outside the parish to make and display a 'scarecrow at the seaside'.

Families may enter more than one scarecrow. Ideally the scarecrow should be displayed in their garden location from Sunday 22nd June to advertise the Village Bash. We ask that they are then brought to the event on Sunday 6th July at 1pm for judging and the chance to win a prize.

Judges' decisions are absolutely final. Prize winners will be announced and presentations made at the Village Bash about 4.30pm.

Competitors are responsible for displaying their scarecrows at the event and are responsible for clearing away their own scarecrow by 5.30pm.

The scarecrow can be smaller but should not be larger than 2.0m wide x 2.0m high. All scarecrows should be constructed to consider the prospect of inclement weather. Entrants are reminded that this is a public event and all scarecrows must be made and displayed in good taste. The Committee reserve the right to withdraw any scarecrows that they deem unsuitable. An entrant designing their scarecrow to cause deliberate offence will be disqualified.

Scarecrows should be placed in a safe location and should be clearly visible from the road. They

should be secured so that they will not blow away, and in a position that will not cause a danger, injury, or annoyance to others. The organising Committee will not be held responsible for any damage to Third Party property caused by the creation or insecurity of scarecrows. Owners are held solely responsible for the safety and security of their scarecrow.

Photographs will be taken of the scarecrows and may be published on the Brize Norton Parish website to advertise the Village Day or used for other purposes after the event.

All entry forms must be submitted to Carolyn Peach before the day by e-mail cpeach.uk@btinternet.com or 52a Station Road, Brize Norton OX18 3QA.

SCARECROW COMPETITION ENTRY FORM

Entrant name

Address for display of scarecrow

Contact telephone number

I agree to the terms and conditions of the competition –

Signed



Brize Norton Ballroom Dance Club


****For all ages****

We are a club that meets **every** Thursday from 7.30pm to 9.30pm in the Elder Bank Hall.

We dance ballroom, latin american and sequence dances to music on CDs.

We enjoy a chat with tea and biscuits during an interval.

Please contact Joy on 01993 842373 for further details.



Chatty Cafe Scheme

The 'Chatter & Natter table' is a wonderful way of encouraging people of all ages to talk to others.

You are welcome to the café anytime when the venue is open. But on the day and time shown below our table will be hosted by a friendly volunteer along with complimentary tea and coffee. Do come along for a chat and a cuppa

Where: Humble Bumble Cafe
Station Rd, Brize Norton, OX18 3PU
www.humblebumblecafe.com
[/humblebumblecafe](https://www.facebook.com/humblebumblecafe)
[/humblebumblecafe](https://www.instagram.com/humblebumblecafe)

When: Tuesdays 10am - 12 midday

How can I find a Chatter & Natter Table?

Look for this sticker in the window of venues in your local area. Venues displaying this sticker will have a Chatter & Natter table set aside with a yellow table talker sign.

Stay for five minutes while you have your drink or longer if you're enjoying chatting.

Having a chat can brighten someone's day
The Chatty Cafe Scheme CIC
Community Interest Company Number: 12111574



Humble Bumble Craft Club

Join Our Crafting Community

Every Thursday from 10am to 12pm at the Humble Bumble Cafe

For a joyful crafting experience!

Meet new friends, explore your creativity, bring and enjoy crafting projects that inspire.

All skill levels are welcome, so come and have fun!



Elder Bank Hall - Timetable

YOU CAN FITNESS

- Tue • 6pm - 7pm (1st Tuesday at 5.30pm)

SSKA KARATE

- Wed • 6.30pm - 7.30pm

20:20:20 FITNESS CLASS

- Wed • 7.45pm - 8.45pm

EYEKANDI FITNESS

- Thu & Fri • 6.00pm - 7.00pm
- Sat • 8.30am - 9.30am

BALLROOM & LATIN DANCING

- Thu • 7.30pm - 9.30pm

YOUNG FARMERS

(Winter months)

- Every other Fri • 7.00pm - 9.00pm

PENTHWELL DOG TRAINING

Sat & Sun mornings • 6 week sessions

TOTALLY SHREDDED FITNESS

Sun • 6.00pm - 7.00pm

Jayne Woodward

Village Hall Update – A Fresh New Chapter Begins!

We're delighted to announce that, from week commencing Monday 9th June, our long-awaited extension will finally be open! This marks a major milestone in our ongoing improvements — and there's plenty more to look forward to in the months ahead.

The New Extension – Versatile, Modern & Inclusive

The main part of the new extension is the large and bright 'meeting room' space with double-doors overlooking the stunning recreational ground, other facilities include:

- A dedicated office for the PC.
- A fully accessible toilet
- Additional storage
- With a welcoming, homely feel – this space was designed so that it can cater for multiple uses, such as: wellbeing and fitness classes, arts and crafts, or one-to-one sessions such as dance or gymnastics. Or...
- A quiet sensory area with bean bags, sensory lights, a television that will have Apple TV for calming music or games. Or... A modern meeting room with Bluetooth-enabled display for video conferencing to take place.

What's next in the Main Hall?

Following the newly installed accessible toilet and baby change unit, we're keen to press on with further renovation work to the hall and facilities.

While we await Charity-status approval, we're actively working with the Parish Council to support their S106 funding application to eventually:

- Replace the doors and windows to keep the hall more thermally efficient.
- Add solar panels to reduce the electricity consumption.
- Upgrade the wall heaters and replace the gas heaters to reduce our carbon footprint

Planned refurbishments include:

- New flooring for the foyer, kitchen, toilets, and storage areas.
- Updated kitchen units and storage
- Refreshed toilet cubicles.
- In the Main Hall: an overdue lick of paint, re-sealed flooring, curtain refurbishments, and reflective paint on the back wall — all ready for Cinema Sundays
- Wall blinds to protect pre-school children's precious artwork
- Improved storage with upgraded cupboards, signage, and finishes

A New Look Bar – Cheers to That!

The new bar area will come to life with help from Steve at The Masons. Expect a smart, upcycled bar surround with new pumps, dispensers, fridges, and energy-

efficient solutions. We're also exploring alternative furnishings to create a welcoming space for events, weddings, and more.

Green Spaces, Bright Places

Soft landscaping is underway in both new and existing outdoor areas, with help from Lisa and her Mam (of Planting, Propagating and Pruning fame). Plans include hanging baskets, lavender and sensory plants, year-round colour, re-shaped beds, a new hedgerow, a community orchard, hopefully a bird table or two, and a swift box to give our wildlife a new home too!

Smarter Booking with HallMaster

We're introducing the HallMaster booking system soon — making it easier to book events, manage regular hire, and handle admin. Keep an eye on our socials for the live calendar! We also hope to link it with the Humble Bumble Café, so that Krystina can quote for catering — making Elder Bank Hall and the Café your one-stop shop for community events and food. You'll also be supporting local!

There's a lot happening — and even more to look forward to. Thank you to everyone who's helped get us this far. Watch this space for regular updates as we continue building a better hall for all!

To find out about Elder Bank Hall or to book, email elderbankhall@gmail.com or go to our facebook page: [@elderbankhall](https://www.facebook.com/elderbankhall)



URGENT APPEAL:

Keep Our Village Brownies from Closing or Moving to Carterton!

Brize Norton Brownies Need a New Brown Owl — Could It Be You?

Barbie Thorne

Brize Norton Brownies is a joyful, spirited group of girls who meet at Elder Bank Hall every Monday evening during term time. Through fun, friendship, and the Brownie programme, we help our girls build confidence, develop leadership, and learn the value of teamwork — all while having a fantastic time. From crafts and games to joining

community events like the village Remembrance Service, carol singing with the church, and exciting trips like a Christmas cinema visit with our District friends, we offer something truly special.

But now, we need your help.

After more than 30 years as a Guider, I've made the difficult decision to step back from Guiding at the end of the 2024–25 school year. Katie, our brilliant helper, is happy to continue — but we can't run without a new Brown Owl. Without one, our village unit may have to close or move to Carterton.

That would be a huge loss. Brize Norton has had a thriving Brownie unit for as long as I can remember,

and it would be heartbreaking to see it disappear.

We're not expecting you to go it alone — full training and ongoing support will be provided by both Katie and me, as well as from our wider Guiding community. The earlier someone can step in, the smoother the transition will be. So please, if you think this might be for you, come and meet the girls. Have a chat with Katie and me. See what we do. I've stayed for three decades because it's that rewarding — and now, we need someone new to keep the magic alive.

Please contact me, Barbie Thorne on 842013 or via email on barbara.thorne534@btinternet.com



Join the
Carterton & District
Branch of the
RBL
ROYAL BRITISH LEGION
Support Our
Armed Forces
Community

Yona Barrett

Each year, in the lead up to Armistice Day on the 11th of November, the nation comes together to support the Royal British Legion's Poppy Appeal. This year, we invite you to add your support locally by becoming a member of the Carterton & District Branch. Your membership and volunteer efforts will help us raise money throughout the year to support our armed forces and their families.

In the past year alone, the residents of Carterton have raised an astounding £26,000+ for the Poppy Appeal. This

impressive figure is a testament to the community's dedication and compassion. The national charity, supported by 180,000 members and 110,000 volunteers, is at the heart of the network that provides everyday assistance to the Armed Forces community. The Royal British Legion offers lifelong support to serving and ex-serving military personnel and their families, thanks to its extensive network of partners and charities.

Given that Carterton and Brize Norton are towns built around the military, the Royal British Legion Carterton Branch was re-formed in September 2023. A new committee was elected, bringing fresh and creative ideas. As a result, membership has grown from an initial 65 members to 89. Our membership base includes not only residents of Carterton but also members from Witney, Faringdon, and Benson.

The branch meets on the third Monday of every month at 19:00 hrs. at Brize Meadow Lodge Care Home, Mile's Drive, Carterton OX18 1NZ. Members are encouraged to bring along a raffle prize, and a buffet is provided in the evening. Initially, the Carterton Branch held meetings at the Carterton Social Club, then moved to the Bowls Club. In early 2024, we were approached by Fran, the Care Home Manager, to hold our meetings at Brize Meadow Lodge. The members unanimously agreed to the move, seeing it as a wonderful opportunity to involve the veterans residing at the home and allow them to join our meetings.

We hope you will consider joining us and becoming part of a community that is dedicated to supporting our Armed Forces and their families. Your involvement can make a significant difference, ensuring that the Royal British Legion continues to provide the essential support and assistance

that our military personnel and their loved ones deserve.

How to Join

If you would like to join the RBL. <https://www.britishlegion.org.uk> for £20.00

- Become a member of the Carterton & District Branch
- Volunteer your time to help raise funds throughout the year

Your participation will contribute to our ongoing efforts and help sustain the invaluable work done by the Royal British Legion. Together, we can ensure that our service members and their families receive the support they need.

We collaborate with the home to raise funds for both our residents and our organization. The Royal British Legion actively engages with the local community, including schools and the elderly, and participates in events like the May Day fair. Our activities include trips, garden parties, fundraising, and tombola, etc.

We recently changed our name to Carterton and District Branch, as the home is in Brize Norton and not Carterton. This new designation covers a larger area.

To contact Yona, Branch Secretary, email ylbarrett1965@gmail.com

Picture Courtesy of RBL Carterton Branch:
(Pictured left to right)
YONA BARRETT – BRANCH SECRETARY
DAVID WESSON – BRANCH PRESIDENT
CLIVE CANTWELL – BRANCH STANDARD BEARER
BRIAN BARRETT – BRANCH CHAIRMAN



At the Carterton Community Centre, every Thursday, we run a Community Hub Coffee Morning. This is an opportunity for residents to pop



Sammy Musani

The New Social Group
in Carterton: A Beacon
of Support for the
Visually Impaired
Community

Since the inception of our first social group in Carterton back in August

into a friendly, welcoming space for a chat, free hot drink and cake. Everyone is welcome, no need to book. Doors open from 10.30am-12.30pm.

More activities & community events, during school holidays, being planned.

We also have several opportunities for local residents to join our team. We are currently looking for a Cleaner – up to 10 hours per week. Flexible hours available. Keyholder position – weekend and holiday cover.

2024, MyVision Oxfordshire is immensely proud to have reached dozens of people living with visual impairment within the local community. In addition to hosting a Social Group in Carterton once every month as well as a Walking Group in Witney every fortnight, we have organised Christmas Dinners, Days out at Blenheim Place, Touch Tours at various libraries and museums across Oxford and so much more.

Living with visual impairment can be one of the most isolating feelings in the world. And when one lives such an insular existence, getting out is even harder. We at MyVision Oxfordshire understand this and do our best to provide services that bridge the gap between loneliness and an independent, fulfilling lifestyle to all those who live with sight loss of any degree. All our services can be easily explored at <https://www.myvision.org.uk/> and we welcome anyone to give us a ring at 01865 725595 to inquire further. Whether you require technology training, home visits or befriending services or would just like to chat about the kinds of tools and services available to you, our friendly team

Lastly, we are looking for keen, enthusiastic, community minded residents to join the management committee. Meetings are held quarterly and last between 1-1.5 hours.

For further information or anyone wanting to apply please contact Gill Carver on 01993 842807 or email us at cartertoncommunitycentre@btconnect.com

is always happy to clarify what is out there.

If you are looking for more localised support, please reach out to Sammy Musani – our Community Engagement Officer for West Oxfordshire and Cherwell – to find out what is happening in your village or town. Sammy can be easily reached via email at sammy.musani@myvision.org.uk or via telephone at 07501687587. Here is a glimpse of just a few of the activities Sammy is organizing in West and Cherwell over the next few months:

- Guided Tour of the Royal Mews at Buckingham Palace (20th June)
- Walk Oxford (22nd June)
- Narrow Boat Excursion (25th June)
- Skydive for Charity at Brackley Airfield (12th July)

All these events have been made accessible for people with impaired vision and we highly encourage you to give Sammy a ring or drop her an email to ask for more details.

To contact Sammy, email Sammy.musani@myvision.org.uk or call 07-501-687-587



New podcast lifts the lid on RAF's largest station

Bev Masters

This year RAF Brize Norton is introducing an exciting new way to find out about what goes on at the RAF's largest station.

BrizeCast is our new Podcast series, available on our YouTube channel.

The series gives you an opportunity to hear from the people that work at RAF Brize Norton, ensuring we are ready to support defence 24/7, 365 days a year. Throughout the series you'll get the chance to hear from our personnel as they talk to us about their roles, the work they do, and what life is like on the base.

In our first episode 'Snow Problem' – available to listen to now – you'll find out how our team of airfield support personnel maintain our operational output when the weather gets tough, by ensuring the airfield and runway are clear of snow and that the aircraft are de-iced ready for departure.

All episodes are available to catch up on, giving you an insight on everything from the roles people are in to the incredible aircraft

and technology we operate. To listen to BrizeCast, search for RAF Brize Norton on YouTube and look for the podcast series. All future episodes will be available to listen to on-demand on the channel.

Scan this QR code to listen now!



The logo for Vicky's After School & Holiday Club Ltd. It features a colorful, stylized design with a girl's face and various activity icons like a soccer ball, a paint palette, and a book.

Our Holiday Club

Dancing & yoga

Indoor play

Baking & music

Arts & crafts

Outdoor play

Sport & activities

Held at Aston & Cote Primary School

Hours are from 8.30am - 5.00pm

Bring packed lunch & water bottle. Snacks will be provided

For further information, dates and prices, please go to our website, or contact us via:

vickysafterschoolclub.co.uk

07887 711454

info@vickysafterschoolclub.co.uk

A row of colorful silhouettes of children engaged in various activities like jumping, running, and playing with a ball.

The logo for the National Open Garden Scheme, featuring a stylized garden scene within a circular frame.

SUNDAY 22nd June

Brize Norton Gardens

Open for charity • 22nd June 2025

All our Gardeners will all now be beavering away, busy manicuring their Gardens to look their best for this Charity event. We have lots of gardens open this year including 17 Chichester Place, 2 Elm Grove, 95 Station Road, Barnstable House, Clumber, Millstone, Painswick House, Rose Cottage and Stone Cottage.

Tea, Coffee and Cake will be served at the Elder Bank Hall

We do hope that you will come along and enjoy all of these beautiful gardens, and don't forget to let us know if you'd like to open your garden next year!

A photograph of a lush, well-maintained garden with various plants, flowers, and a path leading through it.

A small illustration of white flowers.

Sunday 22nd June • 1:00pm to 6:00pm

Adult admission £7.50, Children's admission free

A small illustration of green leaves.

Brize Norton Open Gardens 2024...

The open gardens made a total of £2,162.50 on our opening on 23rd June 2024.

From this amount we donate a

percentage to four local groups and schools. This year we chose the Brownies, the church, the primary school and the pre-school. The NGS has charities that are hugely helped every year by the open garden scheme.

In 2024, £3,501,227 was raised by people opening their gardens all around the country. Their charities are all nursing and health charities. Please come and support Brize Norton Open Gardens on the 22nd June.

An illustration of various vegetables including a cucumber, a purple eggplant, and a red chili pepper.

50TH BRIZE NORTON ANNUAL HORTICULTURAL SHOW

Celebrating the 50th anniversary of the Show

Are you green fingered? Creative or crafty? Got a secret recipe for chutney?

Categories for vegetables, flowers, baking and handicrafts. And specific classes just for children.

Join the fun and have a go!

Brize Norton Horticultural Show

An illustration of a pink cake with white frosting, a loaf of bread, and a jar of jam, next to some green leaves and a large orange flower.

Planting, Propagating & Pruning



Spring/Summer Gardening

FROM LISA-MARIE & HER MAM

By Lisa Hudson



Before we get started, I just wanted to say a **HUGE THANK YOU** to Lisa at Apple Acre for the incredible effort she puts into her front garden – it's always a joy to see, especially her much-loved elephant, No Joke. He's become a real local favourite, bringing smiles to so many who pass by. *Your creativity and cheer brighten our village – thank you, Lisa!*

🌸 May-June

We hope you all enjoyed the warmer weather this April, what a treat with all the spring flowers out and the trees in blossom. The warmer weather is now here, and the evenings are lighter for longer, so enjoy being out in the garden!

- If you have sewn beans, squash or corns indoors, you can now plant them outside.
- There could be a few frosty nights in May, so be careful not to plant your beds

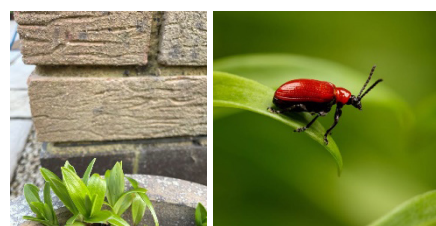
too early and keep your seedlings under cover until after the last frost.



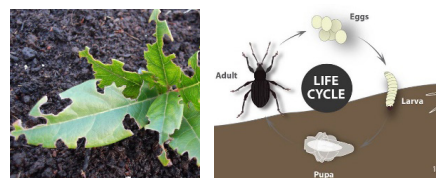
- Tidy up the garden ready for the summer – sweep up and clean your patio and furniture ready for some alfresco dining!
- Look after your lawn by raking away any moss. This may leave your lawn looking bare in many places but sprinkle some grass seed, cover with compost and keep watering and your lawn will be looking lush and green in no time.
- If you have wood furniture, wash them and give them a light sanding down if needed and treat them with oil or varnish to preserve the wood and to keep them looking good, this will help with longevity.
- If you have strawberries or raspberries, feed them well to encourage more fruit and add mulch/straw to strawberries.

🌸 June-July

- If you have lilies, they should be well on their way now but look out for lily beetles. They are bright orange/red and eat the foliage and are good at hiding! They are best picked off and removed from your garden.



- When you are in the garden enjoying the space, remove any old flowers you see to encourage more blooms. Keep up the deadheading!
- Look out for white/green fly and any other pests on your plants both outdoors and in your greenhouse(s) and treat them accordingly.
- If you have a sad looking plant and there is nothing obviously wrong, dig the soil as you may have vine weevil. These look like fat white maggots. They eat the plant from the roots, so the best thing to do is remove and dispose of the compost, wash your pot, check the roots for any more vine weevil and re-plant.



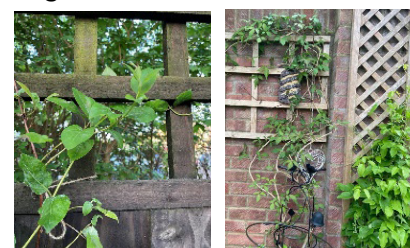
- If you want to grow carrots, beetroots, swede or radishes, these can be sewn straight out in the garden.

🌸 July-August

- During July, it's important to continue watering, feeding, deadheading and trimming. There should be fruit and vegetables ready for picking too!



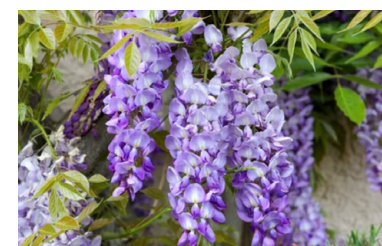
- Water your garden early in the morning or late in the evening when it's cooler. Pots, baskets etc, will dry quickly during hot spells. Keep soil well fed to keep your plants fresh for as long as possible.
- Continue to feed and weed your flower beds – it really does help giving those extra nutrients.
- The more you deadhead, the more the flowers will reproduce and encourage bigger blooming.
- Check on any climbers and make sure the supports are still sufficient to keep up with their growth. Tie up the new growth.



- How is your lawn looking now? To prevent it from going yellow, keep it well watered, mow it regularly and trim the edges to keep it looking tip top.
- If you have a larger lawn, why not keep an area longer to create a wildlife meadow?
- Pick ripe fruit and vegetables like strawberries and raspberries, tomatoes and courgettes.
- You can now plant out leeks and broccoli for some winter supplies.
- Keep checking for pests and diseases. We had rust leaf on roses last summer. It came

quickly, but once treated it soon recovered!

- If you have a wisteria, prune any new whippy growth to encourage the more blooms in the spring. Cut back seven nodes (bulges on the stem).



- Clean and top up water features, bird baths to provide a source of water for

all wildlife. a low-down water source for fledgelings too and add a stone so they can hop in and out if necessary.



To contact *Lisa or her Mam*, please email jayne@chapelhillgroup.co.uk



Needing a little help?

Simon Rhodes
Painter & Decorator

- Interior and exterior painting
- Over 25 years trade experience
- Based in Brize Norton
- 07919 871523
- simonarhodes@hotmail.co.uk



Looking back to when...

We turned 2000

Tim Gush & Phil Holmes

A quarter of a century on from the Millennium – the world didn't end and Brize Norton partied!

It doesn't feel like 25 years since the Millennium! Perhaps it is time to reflect? Who can remember it was predicted that all the computers in the world would crash or the 'flat earth' brigade thinking the world would come to an end?!! Nothing happened – night followed day as it had for millennia before.

Actually, a couple of things did happen. Brize Norton village made a special effort to celebrate the turn of the century. The first event was a glamorous New Year's Eve party, followed by a fun-filled, mid-summer jamboree.

The jamboree was held on the 16th of June and, as the photos testify, we were blessed with wonderful weather. The photos give a sample of the entertainment – falcons, children's tea party, games, rides, Morris dancing and a photograph of the attending crowds.

The event also featured an exhibition of the history of Brize Norton, through photographs and artefacts donated by the villagers. It was accompanied by a 'giveaway' leaflet – 'A brief history of the village of Brize Norton'.



This was re-published and extended by Phil in 2013 under the title "Brize Norton through the Ages" (available at https://www.bncommunity.org/brize_norton/millennium_history.pdf).



To commemorate the 2000 events, the committee agreed that a locally sourced stone be placed outside the Elder Bank Hall (pictured).

The stone was generously donated from the Burford Road Quarry and kindly manoeuvred into place by Bob Willimont and his tractor.

The celebrations were a great success, and the millennium committee should be proud of its achievements.

Twenty-five years on there may be gaps in the details.

If anyone can 'fill in' the gaps with names or photographic images, we would love to hear from you.

Village Living



From Sand to Strength

Villagers Voice

Grant Smith

The Marathon Des Sables (MDS) is a six-day, 250km (157-mile) race across the Sahara Desert. It broke me down and rebuilt me in ways I never imagined possible. The reality of MDS hits you on day one. Despite all my training, nothing truly prepares you for that first step into the endless

sea of sand under the merciless Saharan sun. My pack felt impossibly heavy at 9.5kg despite months of agonising over every gram. By midday, the temperature had soared past 40°C. The long stage (around 82km) nearly finished us all. Starting before dawn and finishing well after midnight, I watched the sun rise, blaze across the sky, set, and then navigated by headlamp through star-filled darkness. My feet were a disaster zone of blisters by then. I remember arriving at a checkpoint, wondering if I could take another step, when a French medic offered me a hug. That

small gesture of humanity got me through the night. The sand dunes were both beautiful and utterly soul-destroying. For every step forward, you slide half a step back. I hallucinated briefly during the night – I started shouting for a friend called Keith, convinced he was just ahead and had my water. My rational brain eventually caught up, but for those few delirious minutes, finding Keith seemed like the most important thing in the world. Living conditions in the bivouac were primitive but oddly satisfying. Sleeping under the stars with Sven (my travel



buddy) and six other runners in an open-sided Berber tent, rationing my freeze-dried meals, and cherishing every drop of water – it strips away everything unnecessary. Even brushing sand out of my teeth became a luxury. The camaraderie was unexpected and profound. Language barriers dissolved as we communicated through grimaces, thumbs-ups and shared suffering. I ran alongside a 76-year-old from the UK for several hours, being told he had socks older than me. Crossing that final finish line, I felt hollow, then euphoric, then completely overwhelmed. My body was destroyed – I lost two toenails, dropped 8lb, and developed a rash that took

“The sand dunes were beautiful and soul-destroying. For every step forward, you slide half a step back.”

weeks to heal. But something fundamental shifted inside me out there in the desert. Now that it's over, people keep asking if I'd do it again. A week ago, I would have said absolutely not.



Today... well, let's just say I'm already looking at next year's race dates. The desert gets under your skin in more ways than one.

If you'd like to nominate someone from the Village to be our next 'Villagers Voice', email jayne@chapelhillgroup.co.uk

Remember this story....



A Taste of Thanks – and a Hint of Mystery Filling!

A huge thank you to everyone who wrote in after our story on Brize Pies—what a response! From tales of flaky pastry and secret family techniques to memories of mouthwatering aromas drifting through the village, it’s clear these legendary pies left a lasting impression.

As for the original recipe? Still missing in action! Some say it’s hidden in a drawer nearby...



Thinking back, I think I always was a “foodie”.

By Sarah Scanlon (nee Thomson)

My memories always seem to return to the food I ate and where I was at the time enriching lifelong experiences.

Brize Norton is high up on the list of how food has shaped my life. My family moved to Brize Norton when I was 3 years old in 1961 and we soon settled down to a wonderful, peaceful existence, being able to walk freely around the village and ramble across footpaths.

One of our family outings was to walk from our house in Squires Arms close and go up to the Mason’s Arms at the top of the village. As a small girl I used to think the walk was very long and liked walking on the raised path leading up to the chapel feeling like I was being very daring on a high wire.

Villagers’ Voice

“Brize Pies...Apparently were so famous that they once featured in an episode of the long running radio show - BBC “The Archers”!”

As a reward for walking so far, my parents would stop at the gable end of the public house and tap on a side window.

The landlady would push up the sash window and we were met with the most delicious aroma of freshly baked pies.

Our eyes would be treated to a display of many pies piled up in the background.

My sister and I were allowed one pie each and the hard decision had to be made. Would it be Steak or Chicken and mushroom?

When we had made our minds up, the pies were presented steaming hot in brown paper bags and the smell was so good.

It was difficult not to burn our mouths as we couldn’t wait to get stuck into our very special treats.

Brize Pies (As we called them) apparently were so famous that they once featured in an episode of the long running BBC “The Archers”!

At 16 years, I went on to study Hotel and Catering and in the course of my career served many famous people including royalty. I went on to teach Catering until my retirement and now live in Devon

You can take the girl out of Brize Norton but you can’t take Brize pies out of the memory!

I now regularly make my own steaming hot pies for the village sustainable market and on Baking day the kitchen is filled with that comforting aroma that takes me straight back to my childhood in Brize Norton.

Happy memories.

Note from the Editor: Since I was once talking to my lovely neighbour... I’ve always been intrigued about Brize Pies and their ‘Secret Ingredients’... If you are prepared to reveal more - let me know! Thank you so much Sarah

If you’d like to nominate someone from the Village to be our next Villagers’ Voice, email james@chapelhillgroup.co.uk

maybe even within pie-flinging distance of this very Chapel. One thing’s for sure—if (or when!) it turns up, we’ll be first in line for a slice of nostalgia and a revival of a truly tasty tradition.

Here are a few messages we received, for those on the trail...

“It was lovely to read the article about the lady who remembered Brize Pies. I was born during the 10 years that my parents – Pam and Neville Edwards – ran the Masons Arms and Brize Pies were the invention of my mother. I think there are still a lot of people who will remember them. Popping into the Masons for a “pie and a pint” was a local pastime!! “I love that there are so many stories flying around!”



The recipe was my mother’s and she refused to pass it on – so yes, I suppose it does remain a secret!”

“I just wanted you to know who was the creator of the Brize Pies – the wonderful Pam. With two small children and only one wage coming in, life was tough for us. But my wife Daphne always managed to put a meal on the table and we looked forward to her ‘Not Much of Anything’ meals. Then her friend, Pam Edwards, in her role of Head Cook at Brize School offered Daphne the job of Assistant Cook at the school and life got better. We will always be grateful to Pam and even in her 80s looked forward to her Xmas mince brize pies delivered by her daughter Marion. “

Thank you to you all again and you never know, maybe we’ll have another update in the next Brize Breeze...



Yummy treats from Brize Villagers

My sourdough bread journey began as an experiment where I could be absorbed in a slow making. I love that it’s half science and half art. Anyone can make sourdough and I encourage you to have a go! I live in the village and am happy to share my knowledge and experience.

We have eaten every loaf of sourdough I have made, even the earlier experiments were edible. I know if it is too wet or dry. Wholemeal flours a little extra water. I am interested how grains are grown and use organic flours, but have recently also used a regenerative flour which gives a very different texture and flavour.



Amazing Rustic Sourdough

MAKING THE ‘STARTER’ OR ‘MOTHER CULTURE’

- You need flour, water, and a jar with lid and the magic happens. It takes two weeks to develop. I recommend you look online for details on how to make. You need to build up the amount as each large loaf requires 300 gms of the starter. After making a loaf add more flour and water and mix well. I top up every few days with a large couple of spoonfuls of flour. Keep in refrigerator. You will find lots of advice online, but I find a good white organic flour to be the best.

EQUIPMENT

- Bowl to mix. Basket or banneton to prove the dough. Pizza stone or baking tray and large metal pan to cover when baking. Rack for cooling.

METHOD

300gms starter/mother culture
500gms bread flour of your choice
225gm luke warm water
large pinch of salt

- Mix ingredients in bowl to form ball of dough – feel the dough it should be wet enough to form a good shape, but not over sticky. Just adjust with a little flour or water. A spoon of water can make a difference.
- Leave for 1 hour take out of bowl and knead – there are different methods of kneading see internet, but basically you are stretching the gluten.
- Repeat twice to three times. Don’t panic about timing, I’ve left it for two hours!
- Sprinkle rice flour in banneton, or use cloth small tea towel to prevent the dough sticking to the basket.

- Shape and place ball of dough into banneton.
 - Leave in fridge overnight or leave for 3 hours.
- Test to check if proved – after 3 hours poke finger into dough if dimple stays in it is proved. Beware of over proving. You won’t need to do this if leaving in fridge overnight.

- Baking – put oven on top temperature and place baking sheet or pizza stone in oven
- When up to temperature sprinkle with semolina onto baking sheet or pizza stone. This prevents dough sticking
- Turn dough out onto the baking sheet or pizza stone
- Slit the top with sharp knife or snip with scissors
- Cover with upside down metal pan – you can bake without this, it just helps to create steam which results in good crust.

- Bake for 20 – 25mins or more. Test by tapping bottom of loaf, it should sound hollow.
- Take lid off and bake for 5 minutes or more depending on your choice.

Cool on rack and enjoy!

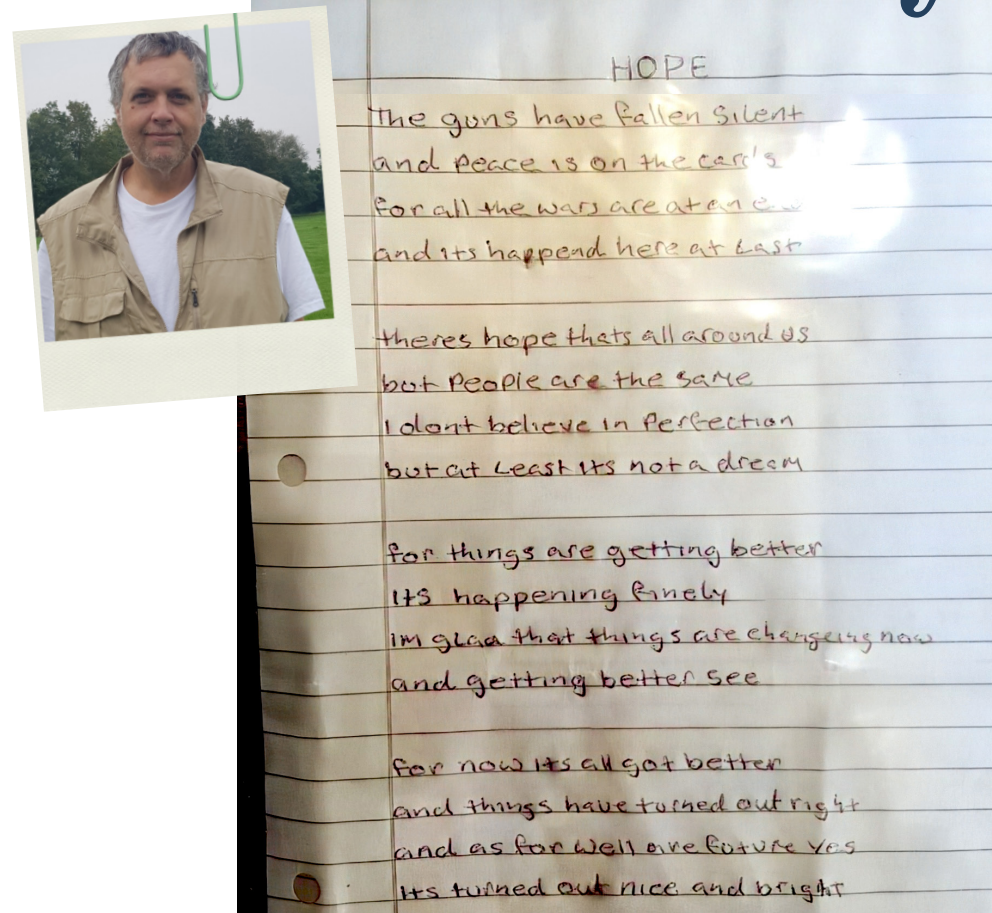
Tips: Different flours do different things, some bubble more as starter, some doughs rise less, but then grow more in the oven.

If you have a starter culture you can make pizza dough and flatbreads with very short proving time. I use Hobbs House Bakery recipe for flatbread and pizza.

Recommended websites:
Matthews Cotswold Flours

Christine is a retired Art Teacher, inspiring artist and has lived in the village for many a year! Christine has waited a long time for this to be published.. So thank you so much Christine!

David's Poetry Corner



It was a tough choice for this issue, with many new poems which David has been writing since our previous issue.

David is also writing a few poems, to put together in a book, so watch this space to find out more in the next issue!

Thanks David

David has lived in the village for a number of years and takes part in the Chatty Café and loves going into the Humble Bumble where he shows his most recent poetry.

Pledge to make a difference this Summer...

The arrival of the summer often means a time to breath, a time for a break and, for some, a little more time on their hands!

For many they think about what they would like the few months to bring and what changes they can

introduce. Volunteering is often a popular choice and one that can be tailored completely to your skillset, experience, interests and commitments.

Whether you have a little or a lot of time to offer, charities are delighted to welcome volunteers from all walks of life.

The best place to start is the Oxon Volunteers website. This hub for volunteering vacancies enables you to search by distance from your home to find very local opportunities and remote, homebased ones: <https://oxonvolunteers.org/>



Making a difference in your community



It Is Not "Just a Picture Frame"...

Jennifer Harrison

Investing in a painting or print, or selecting a special photograph to hang on the wall, can be a lovely way to enhance your space.

1. Off the Shelf

Ready-made frames are an affordable, easy option—but quality matters. Choose solid wood rather than composite materials like cardboard, which absorb moisture, lack strength, and deteriorate over time. Solid wood frames are sturdy and better withstand atmospheric changes..

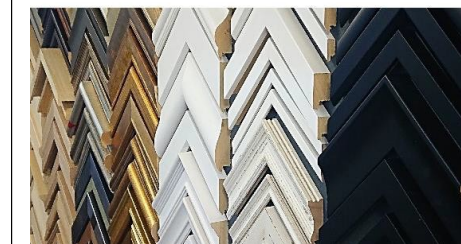


2. Advice

When you're looking to frame a picture, there are many options available. When framing a picture, many options are available. Consulting a professional framer can be helpful—they have experience, design insight, and deep knowledge of framing materials.

3. Cost

Good quality picture framing can be an expensive service due to the extensive manual work involved. Apart from the cost of materials, you are also paying for the initial consultation, the construction of the frame, and the presentation and installation of the artwork. A reliable framing service will use only conservation materials to protect your work.



4. Choices

Look online or at friends' homes for framing inspiration. Take photos of styles you like to your framer. Even if unsure, they'll help guide you. You can also frame sentimental items like medals, memorabilia, poems, and photos. Witney Framing specialises in framing all types of pieces.

5. Hanging

Your picture framer can provide valuable advice and tips on how to hang your artwork in the best possible way. They may also be able to recommend a local

professional who can help with hanging.

Consider the frame as the final touch, as it not only showcases your artwork but also complements its appearance. Moreover, the frame serves as a protective layer, preserving the beauty of your artwork.

At Witney Framing, our expert framers are always available to assist you. With years of experience and a passion for creating beautiful frames, we are confident that we can help you find the perfect frame for your artwork. So, feel free to drop in anytime with your artwork and let us assist you.

Witney Framing

Witney's only Picture framing shop, offers a high-quality bespoke & standard framing service; We also have a large stock of quality British readymade frames.

We frame original artworks, prints, certificates, medals, sporting memorabilia, family photos and keepsakes. Hundreds of frames to choose from, as well as a wide selection of mounts and glass. Read Our reviews & see why we are Witney's best.



www.witneyframing.co.uk

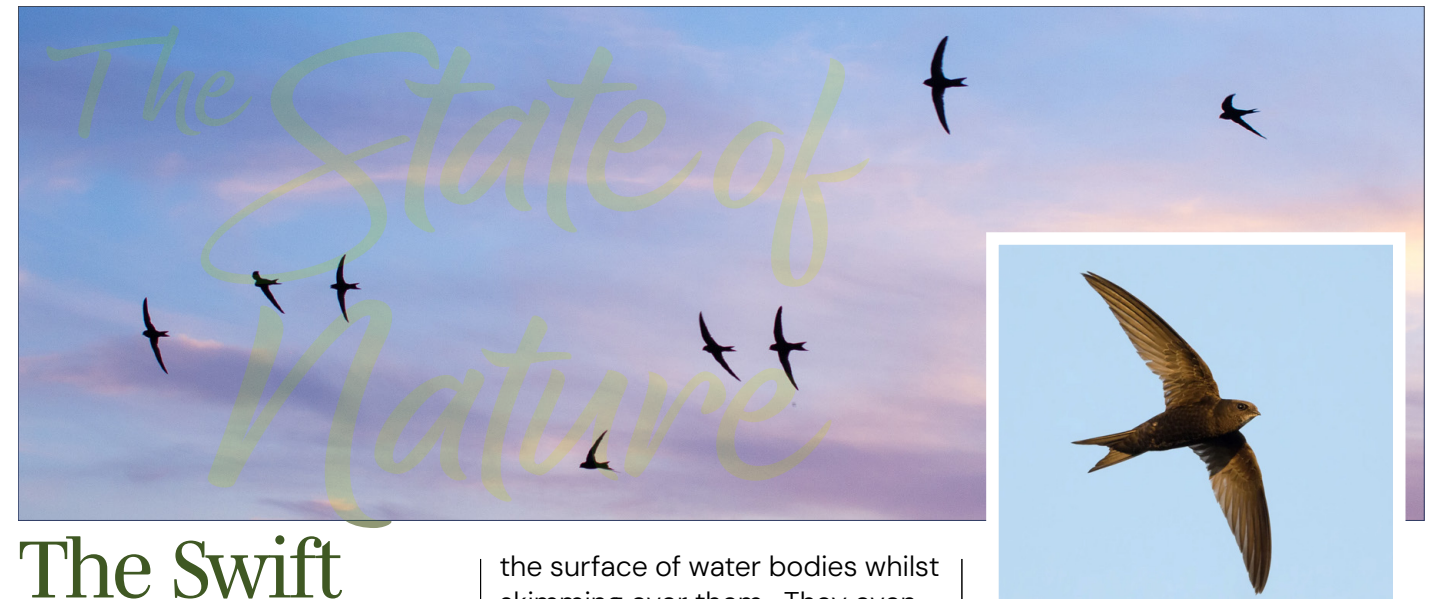
Full Framing Service • Readymade Frames Glass
Repairs • Replacement Mounts • Fitting service
• Military Items • Sporting Items • Mirrors

Tel 01993 862 799

11 Langdale Court, Witney,
Oxon OX28 6FG



All Creatures...



The Swift (*Apus apus*).

Ady State

The swift is a summer visitor to our shores here in the UK and usually arrives from Southern Africa at the end of April/beginning of May. They are getting scarcer in the UK for a number of reasons, with the main ones being that there are now far less insects than there used to be. The secondary reason is a lack of nesting sites as modern houses tend to have sealed soffits and gables preventing the swifts using these spaces under the eaves.

They are one of the most incredible of our avian visitors, as not only do they migrate around 3,400 miles twice a year just to come here to breed, but during all that time they only touchdown when actually on the nest. As their young do not normally nest in their first year, this can mean they may not touch down for almost two years, making them probably the only creatures on the planet that are totally of the air.

They do all their feeding on the wing and will scoop water from

the surface of water bodies whilst skimming over them. They even appear to mate in the air and it is suggested that they may also sleep on the wing.

They commonly spend much of the hours of darkness at heights of over 10,000 feet and pilots have recorded them at even greater altitudes.

They are our fastest bird in level flight, achieving speeds up to 70mph (Peregrine falcons achieve higher speeds but only when in a dive).

With all these amazing abilities it would be a terrible shame if we lost these incredible creatures. They are so wonderful to watch in flight as they swing and turn at high speed to collect their insect prey. And what a lot of insects that is!

Swifts can catch 20-100 thousand insects a day and they feed their young with a bolus (ball) of insects containing around a 1000 insects, obviously these are very small insects in the main, but a good number of them will be the midges that would otherwise be biting us!

Once they have found a decent nest site they remain faithful to it year on year, but they are only with us for a short period from May to July-August. They are found right across the UK from

the Channel Isles right up to the Shetlands.

I do see them flying across the rooftops of Brize Norton with their characteristic screaming call, but as of now I only know of one site in the parish that hosts them. I would love it if some of our readers could let me know of any other sites in the parish.

I would also be happy to hear from any residents interested in hosting a swift box in the village.

They are pleasant visitors because they create no mess, as they move their droppings away from the nest site and are only here briefly anyway. Nest sites do need to be a minimum of 5 metres above ground or higher so not everywhere is suitable.

Sites for reference:

RSPB: <https://www.rspb.org.uk/birds-and-wildlife/swift>

Swift Conservation: <https://www.swift-conservation.org/>

British Trust for Ornithology: <https://www.bto.org/our-science/topics/tracking/tracking-studies/swifts>

Get in touch with Ady via
adystate@gmail.com

Keeper becomes surrogate mother...

...to park's first orphaned wallaby and we WIN Zoo of the Year!

By Debbie Ryan

Meet Elvis, the Parma Wallaby joey recently born at Cotswold Wildlife Park. Elvis was orphaned soon after birth, as Deputy Head of Mammals, Jenni Maxwell (pictured right), explained: "Sadly, his mother died whilst he was still in the pouch. Without intervention, he wouldn't have survived."

Jenni took on the responsibility and became a surrogate mother to the vulnerable newborn. Not only is this the first time Jenni has raised a joey, it's also the first time in the park's history that a Parma Wallaby has been hand-reared.

Staff at the park immediately made preparations for the orphan, which included making a new home to mimic his mother's pouch.

Chris Kibbey, Assistant Animal Manager, Registrar and keen amateur sewist, said: "After discussing a few size requirements, I raided my haberdashery for some baby soft fabric and got out my sewing machine."

Jenni took the joey home where he could be given around the clock care and ultimately the best chance of survival.

She said: "At the beginning, I was feeding him every two hours throughout the day and night.



The feeds would take about 40 minutes so it was a long process and I learnt how little sleep you can function on!"



The joey has been given free rein of Jenni's house. In the evenings he enjoys a fuss from Jenni and nestles up to her on the sofa. He particularly likes being brushed under his chin with the tiny comb Jenni has for her hamster and cuddling up to his kangaroo teddy.

Now he's grown in confidence and size, he's started to graze in Jenni's garden. He's also taken daily to the park's wallaby paddock, not only to exercise and strengthen his legs, but also to get him used to being among his own species.

Jenni added: "As time has gone on, his personality has really

come through and he's got quite the attitude for such a little man!"

Elvis's story comes as the Cotswold Wildlife Park is celebrating coming out on top of the Outdoor Toys UK Zoo Index for the second year in a row!

Reggie Heyworth, Managing Director of the park, commented: "To receive this accolade two years in a row is amazing."

In the last couple of years, the Park has been named best family attraction at both the Muddy Stiletos Awards and Little Ankle Biters' Awards.

The Best Zoos in the UK

Compiled by OutdoorToys
They have looked at affordability, reviews and overall zoo popularity, and have created an index to reveal the best UK zoos for families!



To contact the Cotswold Wildlife Park or found out more, email: enquiries@cotswoldwildlifepark.co.uk

CELEBRATING NATIONAL PET MONTH AT RAF BRIZE NORTON!

RAF Brize Norton have been celebrating National Pet Month by meeting the many furry friends who join us regularly and their owners from across our entire force.



Croc's Corner

Becky Mansfield



New Gator Golf opens at Crocodiles of the World

We are beyond excited to bring you Gator Golf! A wild golfing adventure now open here at Crocodiles of the World. You can enjoy Gator Golf as a stand-alone attraction, or a fun addition to your visit to the zoo! The choice is yours!

Here's a sneaky peek to give you a small glimpse into our tropical jungle where you navigate your way around 15 putterly brilliant golf holes. Great fun for all the family and all golfing abilities!

What are you waiting for...

Book online here: <https://crocodilesoftheworld.digitickets.co.uk/tickets>

Gator Golf FAQ and more info here: <https://www.crocodilesoftheworld.co.uk/gator-golf/>



THE VILLAGE DIRECTORY

LOCAL INFORMATION

- **Brize Norton Parish Council**
clerk@brizenortonparishcouncil.co.uk
- **St Britius Church • 846996**
- **Brize Primary School • 842488**
www.brizeprimary.org
School Governors
Alistair Doran • 07788 214 663
adoran@brize-norton.sch.co.uk
BNPS School Association
Emma Baughan
bnsa_fundraising@outlook.com
- **Brize Norton Pre-School**
Jackie Hampson • 07769 617 696
brizenortonpreschool@hotmail.co.uk
- **Brize Norton FC • 841096**
Adam Harris • 07415 331645
adam.harris@aplan.co.uk
- **Elder Bank Hall • 622714**
Jayne Woodward
elderbankhall@gmail.com
- **Ballroom, Latin Dancing • 842373**
Joy Douglas
- **Open Gardens**
Dawn Humphris & Brian Trott
dawnhumphris@btinternet.com
brian.trott3@btinternet.com

LOCAL BUSINESSES



USEFUL INFO

- **Post Office at the Sports Pavilion**
Tuesday & Thursday
9.30am – 12.30pm
- **Police (Witney) • Call 101**
10am - 6pm Monday to Friday
(Closed Saturday/Sunday)
- **NHS helpline • Call 111**
(24/7 urgent medical conditions)
- **Council Info**
District Councillor for Brize Norton and Shilton Ward -
Councillor Rosie Pearson
rosie.pearson@westoxon.gov.uk
County Councillor for Brize Norton and Carterton East Division -
Councillor Toyah Overton
Toyah.Overton@Oxfordshire.gov.uk
Member of Parliament for Witney -
Charlie Maynard
charlie.maynard.mp@parliament.uk
- **Planning proposals for Brize Norton and Surrounding area**
[www.westoxon.gov.uk /planning-proposals](http://www.westoxon.gov.uk/planning-proposals)



Brize Norton Parish Council

Find out more about our Parish Council and the work they're doing at brizenortonparishcouncil.co.uk or FB @brizenortonvillage

BRIZE BREEZE ISSUE 183



Les Goble
Chairman

I moved to Brize Norton from Worthing, West Sussex, in 1997. I'm semi-retired and joined the Parish Council in 2018. It was at this time, I was asked to form a Steering Group to write our developing Neighbourhood Plan. My main hobby lies in motor sport and I'm very fortunate to race in historic endurance events both here in the UK and Europe. I can often be seen walking our Cockapoo, Maude, around the village or in the Humble Bumble café having a welcome cup of coffee.



Chris Woodward
Vice-Chairman

I have spent over 12 years on Local Councils, including both Witney Town Council and Brize Norton. With many years of experience under my belt, I am hopeful it will be of benefit to the village. I moved to the village in 2016 and live with my beautiful wife Jayne, our daughter Mackenzie, and our labs, Meg & Doodle.



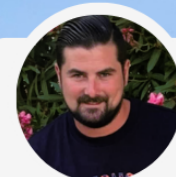
Wendy Way
Councillor

I moved to Brize Norton in the late 1980s and joined the Parish Council in 2016 after taking the decision to move to part-time working. My hobbies are gardening and the allotment, and I enjoy supporting my partner who races an Aston Martin DB4 which takes us to various motor racing circuits around the UK and Europe. You will also see me out walking our Cockapoo, Maude.



Carol Fothergill
Councillor

I moved to Brize Norton in 2019. My childhood was in a military family, my working life as military and civilian nurse which took me to many places and countries until I retired. I enjoy volunteering, the outdoors, gardening and am passionate about wildlife, hedgehogs especially.



Adam Bennett
Councillor

I moved to Brize Norton in 2021 with my wife and two children. I enjoy being part of a small village and the community spirit that comes with it, I enjoy going to the gym, spending time with my family and going on long dog walks in the countryside. Feel free to say hello if you see me with my very energetic fox red lab, Louie ...



Emma Jackson
Councillor

Introducing Emma Jackson to the Parish Council. We will be bringing you more about Emma in our next Issue of the Breeze



Jo Webb
Clerk

I moved to the village in 2000 and live with my husband and three sons. We enjoy village life and the community spirit within Brize Norton. This is my second stint as Parish Clerk, I liked it so much I came back to do it all again! Please feel free to say hello if you see me walking my large, rather bouncy dog.

Looking for A Kind and Caring Home this Spring?



Rated 9.9/10 by
carehome.co.uk



Brize Meadow Lodge Care Home

We are welcoming new residents

Brize Meadow Lodge offers a warm and welcoming home with attractive décor and landscaped gardens. Each of the 66 spacious en-suite bedrooms promotes independence, with modern amenities and a focus on person-centred care. Our dedicated, highly trained team ensures quality care and encourages an active lifestyle, supporting residents in all their needs. Set in a peaceful location, the home provides a tranquil retreat while being within easy reach of the local community.

Brize Meadow Lodge, Miles Drive, Brize Norton, OX18 1NZ
Residential and residential dementia care



Ask about our introductory spring offers

For more information or to arrange a visit, contact our friendly team on:

T: 01993 323 313 | **W:** hc-one.co.uk | Part of the HC-One Family of Care Homes

T&Cs apply - contact us for full terms and conditions. Offer subject to room availability. Only applies to fully-funding residents.

