

BRIZE NORTON

February to April 2024 • Distributed to over 850 homes & businesses in and around Brize Norton Village

Breeze

Brize Meadow Play Park

Wendy give us an update and introduces the people helping the project

What does 'home' mean to you?

Rosie looks at how 'home' is an important part of communication and participation

Is the sun going down on the effect of signs?

An anonymous writes in Villager's Voice

**We look back on
the Christmas Fun and
Fabulous Christmas Lights
of 2023!**

BIG Competition Time!

Cotswold Wildlife Park kindly provide an amazing prize for our readers!

Issue

180



Welcome to issue 180 of the **BRIZE NORTON** *Breeze*

This community magazine has been written by the people of Brize Norton, for the people of our village (with a little help from a few friends too).

To all of the article writers who have donated their hard-earned free time to help, we thank you. This magazine would be nothing without you!

About Brize Breeze...

The hope is that the magazine can be self-financing via a little advertising. Any money left over goes into a community fund pot to help our charities, associations, schools, clubs and projects in the village.

The Brize Norton Parish Council will subsidise any shortfall.

Thank you to all the advertisers who have supported this issue and for supporting our village.

PRODUCTION TEAM

- Jayne Woodward - Editor & Designer
- Jane Hornsby - Photography
- Molly Campion - Social

TO ADVERTISE, SEND AN ARTICLE, RECIPE OR PHOTO FOR THE NEXT ISSUE

- Contact Jayne:
✉ jayne@chapelhilldesign.co.uk
f @brizenortonbreeze
☎ 07810 255 000



CONTENTS

February to April 2024 • Issue 180 • FB: @brizebreeze

ON THE COVER

8 BRIZE MEADOW PLAY PARK

- Wendy gives an update

16 CHRISTMAS FUN & VILLAGE LIGHTS

- What we enjoyed last Christmas in the village

19 WHAT DOES HOME MEAN TO YOU

- Rosie talks about the effect home life can have on community life

24 THE EFFECTIVENESS OF SIGNS

- An anonymous writer tells their view

34 BIG COMPETITION TIME

- Cotswold Wildlife Park kindly donate the big prize for this issue!

COUNCIL INFORMATION

5 FIRST ANNIVERSARY ISSUE

- Wendy takes a look at what's been going on in Brize
- A reminder of your local Council's responsibilities
- Meet your Brize Norton Parish Council

AROUND OUR VILLAGE

9 BRIZE NORTON FOOTBALL CLUB

- Simon gives us an update
- Minster Lovell Cricket Club at the recreational ground
- Did you know Brize Norton have a netball team?

10 THE HUMBLE BUMBLE CAFE

- Krystina talks about Conversation. Community. Connection.

11 BRIZE MEADOW LODGE

- A letter from Frances, the new Home Manager

12 BRIZE PRE-SCHOOL

- A busy start to the term!

13 BRIZE PRIMARY SCHOOL

- Robyn talks about Inspiration and Engaging activities

14 ST BRITUIS

- A lot is going on over the next few months!

15 POPPY APPEAL & POETRY

- Barbie thanks everyone for their help in raising a huge amount last year
- David gives us his latest poem

VILLAGE LIVING

20 POPULATION & OCCUPATIONS

- Dr Phil Holmes takes us through the history of Brize Nortons people

22 JOURNEY TO A HAPPY HEALTHY COMMUNITY

- Molly tells us of her Story of Connection and Contribution

ALL CREATURES

26 STATE OF NATURE

- Ady looks at Brize Norton's wildlife

27 NEXT GENERATION

- Debbie tells us about two new animal pairs to join the Park as part of the European Breeding Programme

28 CROCS CORNER

- Becky tells us about the Clouded Leopards and a top secret project!

28 BLUE CROSS APPEAL

- Our friend Lianna is looking for a new home

WHAT'S ON

30 CLUBS, CLASSES GALORE!

- Our Brize Village Calendar & a couple of 'Save the Dates'

INFORMATION

32 HELP...

- National Sleep Helpline
- Support our local postoffice!
- More of our fabulous advertisers who continue to support the Brize Breeze
- Village Directory including local businesses who can help

BIG COMPETITION

35 A BIG PRIZE!

- Information on the prize for this issue, kindly donated by Cotswold Wildlife Park and also the winners from previous issues!



Hickman Brothers' Landscapes Ltd

01993 822226

Local Garden & Landscape Supplies

Our friendly and knowledgeable staff are always happy to help with all your garden projects & requirements
Aggregates, Topsoil, Compost, Fencing, Slabs, Tools & much more
We have a great range of Trees & Shrubs
and a fantastic range of Olive Trees

COME AND VISIT OUR NURSERY & STORE

Plant Hire & Skips



Logs, Coal & Kindling



PLANT HIRE

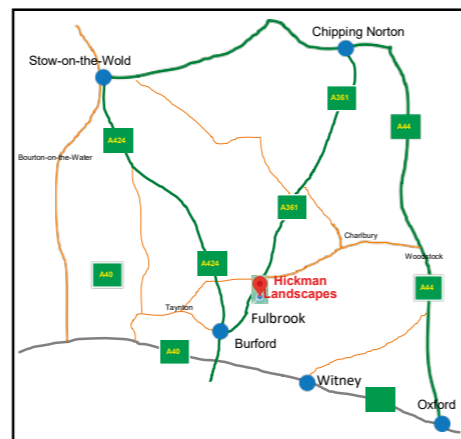
- Skip Hire
- Roll on / Roll off Bins
- 360 Excavators
- Motorised Wheel Barrow
- Stump Grinder
- Wood Chipper
- Lawn Scarifier
- Small Dumper
- Cement Mixer
- Wacker Plate
- Rollers
- Rotovators
- Other items on request

GARDEN SUPPLIES

- Garden Furniture
- Fire Pits
- Wheelbarrows
- Cement / Postfix
- Turf / Grass Seed
- Fertilizers
- Mulches
- Weed Fabric
- Decorative Aggregates
- Trellis
- Decking, Pergolas & Sleepers
- Obelisk
- Pots
- Rockery Stone
- Machine Round Poles
- And much more

DESIGN

- Full In-House Design Service
- Site Survey
- Implementation of Design
- Garden Maintenance



Slacker.warblers.montage

OPENING HOURS

Monday - Friday 07:30-17:00pm
Saturday - 08:00-14:00pm
Sunday - Closed



Hickman Brothers Landscapes Ltd
Sipton Hill
Fulbrook
Burford
Oxfordshire
OX18 4BZ
Tel : 01993 822226
Email : sales@hickmanlandscapes.co.uk
Website : www.hickmanlandscapes.co.uk



“Some people look for a beautiful place.
Others make a place beautiful”

~ Hazrat Inayat Khan

(Sufi teacher and brilliant musician from India)



Wendy Way

**Welcome to our
First Anniversary Issue
of the Brize Breeze.**

May I and my fellow Councillors take this opportunity to thank the Production Team who put this fabulous magazine together for all their hard work.

This magazine can only continue to be successful if you, the wonderful people who live and work in our lovely village support them with articles. They are a nosy bunch and want to know interesting things about you. Please get in touch so we can all learn more about you and your interests. You may like to share adventures you have had, someone famous you may have met, places you have visited, an unusual hobby you have (bell ringing, circus skills, fire eating)

or a story about an interesting object you own.

Since the last edition I have two pieces of good news to share with you.

Following the changes to our bus timetable in August 2022, the Parish Council has continued their dialogue with OCC Highways, Andrew Gant the cabinet minister for Highways Management, and County Councillor Nicholas Field-Johnson, about the lack of a footpath to the bus stops at Monahan Way and lack of bus shelters.

Results of this is that OCC has confirmed that funds have been secured to extend the footpath along Minster Lovell Road to the bus stops on Monahan Way. We are awaiting the formal paperwork to be issued and there will be a temporary road closure (excluding the school buses) and work should take place in February.

Please keep an eye on the Parish Council website, Facebook and the

noticeboards for details.

The second piece of good news is that OCC has also confirmed funds to erect bus shelters at the two stops on Monahan Way. We don't yet have a set date for the work to begin but we hope that the work will be carried out by the end of this financial year. Again, please look out for information on the Parish Council website, Facebook and the noticeboards.

As reported in edition 178, West Oxfordshire District Council is reviewing its Local Plan to allow it to extend to 2041. The Parish Council responded to the initial consultation held last year and we are waiting to read the consultation summary report that was due for publication at the end of 2023.

We should be 'breaking ground' for the new extension to the Elder Bank Hall in the next couple of months.

We are also engaging with local architects to deliver a design

“... funds have been secured to extend the footpath along Minster Lovell Road”



“... to make our village a beautiful place to live and work, we all have a part to play”

concept for the new Sports Pavilion.
Referring to my opening quotation, to make our village a beautiful place to live and work, we all have a part to play. If you see a pothole, a blocked drain on the road or a streetlight not working – report it to OCC via their website and type in Fixmystreet, if you see fly-tipping – report it via the WODC website. If you see some rubbish on the

footpath – put it in a bin or join us on our regular ‘litter picks’. Please do not assume that someone else will do it! As a community, we should all have a responsibility to care for our village.
Finally, on behalf of the Parish Council I had great pleasure in presenting Fred with some vouchers for him and Kath to enjoy a meal to thank him for his many years of maintaining our wonderful recreation ground. We

are yet to make a final decision as to who will take over the task but should have this resolved very soon.

Enjoy reading our Anniversary Issue!

To contact
Wendy (Chairman) or Jo (Clerk)
w.way@brizenortonparishcouncil.co.uk
clerk@brizenortonparishcouncil.co.uk

Brize Norton Parish Council

Find out more about our Parish Council and the work they're doing at brizenortonparishcouncil.co.uk or FB @brizenortonvillage

Wendy Way
Chairman

I moved to Brize Norton in the late 1980s and joined the Parish Council in 2016 after taking the decision to move to part-time working. My hobbies are gardening and the allotment, and I enjoy supporting my partner who races an Aston Martin DB4 which takes us to various motor racing circuits around the UK and Europe.
You will also see me out walking our Cockapoo, Maude.

Chris Woodward
Vice-Chairman

I have spent over 12 years on Local Councils, including both Witney Town Council and Brize Norton. With many years of experience under my belt, I am hopeful it will be of benefit to the village. I moved to the village in 2016 and live with my beautiful wife Jayne, our daughter Mackenzie, and our labs, Meg & Doodle.

Les Goble
Councillor

I moved to Brize Norton from Worthing, West Sussex, in 1997. I'm semi-retired and joined the Parish Council in 2018. It was at this time, I was asked to form a Steering Group to write our developing Neighbourhood Plan. My main hobby lies in motor sport and I'm very fortunate to race in historic endurance events both here in the UK and Europe. I can often be seen walking our Cockapoo, Maude, around the village or in the Humble Bumble café having a welcome cup of coffee.

Ady State
Councillor

On retirement in 2020 I moved from Witney to Brize Norton. Much of my life has been spent working in the electronics and software fields and this has led to extensive travel throughout the world. I have a BSc in Environmental Biology which reflects my lifelong interest in the natural world. I am also a very keen birdwatcher and can often be found walking the local lanes and footpaths with my trusty binoculars.

Adam Bennett
Councillor

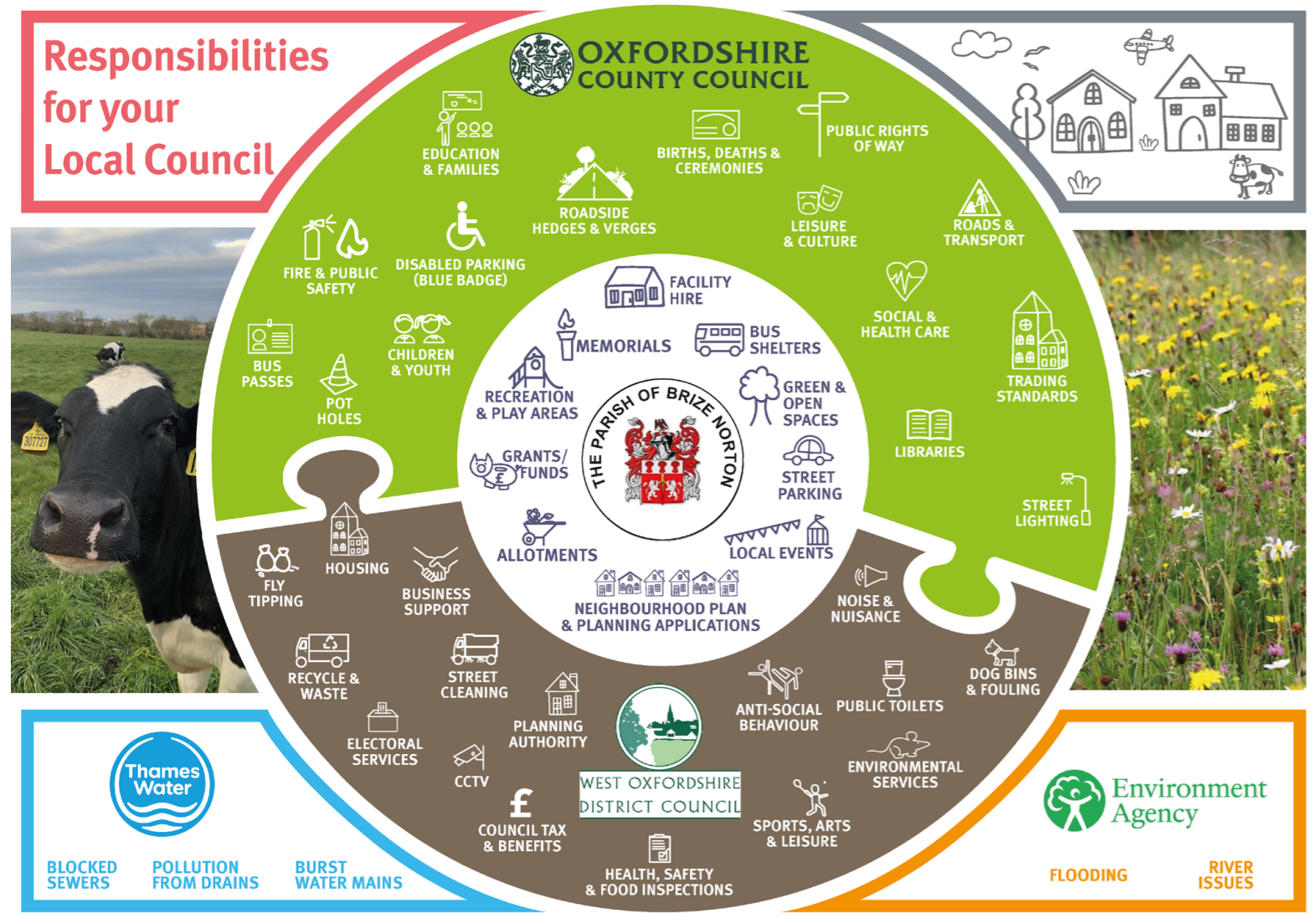
I moved to Brize Norton in 2021 with my wife and two children. I enjoy being part of a small village and the community spirit that comes with it, I enjoy going to the gym, spending time with my family and going on long dog walks in the countryside. Feel free to say hello if you see me with my very energetic fox red lab, Louie ...

Carol Fothergill
Councillor

I moved to Brize Norton in 2019. My childhood was in a military family, my working life as military and civilian nurse which took me to many places and countries until I retired. I enjoy volunteering, the outdoors, gardening and am passionate about wildlife, hedgehogs especially.

Jo Webb
Clerk

I moved to the village in 2000 and live with my husband and three sons. We enjoy village life and the community spirit within Brize Norton. This is my second stint as Parish Clerk, I liked it so much I came back to do it all again! Please feel free to say hello if you see me walking my large, rather bouncy dog.





Brize Meadow Play Park Update...

Wendy Way

Since my last update back in the summer of last year a lot has been happening behind the scenes of this really exciting project. The Play Park will have everything in it that the children asked for who came along to the consultation afternoon, with some additions!

HAGS UK was the successful bidder to supply and install the Play Park equipment and Hickman Brothers Landscapes to create the landscaping. This is what they had to say:

“HAGS are looking forward to working in partnership with Brize Norton Parish Council to deliver this fantastic new play space to the Brize Norton community. The new community space will offer various engaging activities including new play equipment

for both the toddler and junior play space. The MUGA (Multi Use Games Area) will enable those who wish to take part in football or basketball the opportunity to do so!”

~ Jilly Saunders, UK Area Manager, HAGS UK

“Hickman Landscapes are delighted to be involved with bringing the Brize Meadow Play Park to completion in the coming weeks. Works will include the planting of trees and shrubs with the incorporation of sensory plants, wildflower seeding, together with areas of turf and topsoiling, all for the enjoyment of everyone.”

~ Tom Hickman, Business Owner, Hickman Brothers Landscapes

“We are pleased to confirm that we’ve submitted a reserved matters planning application to WODC to secure detailed planning approval for a new play area at Brize Meadow. Once the decision is confirmed, we will transfer the land to the ownership of Brize Norton Parish Council. The Parish Council can then install ‘Brize Meadow Play Park’ using financial contributions made

by Bloor Homes as part of the Section 106 agreement.

“We continue to support the Council with the project for young people and families in the local area to enjoy and look forward to its opening in 2024.”

~ Andrew Winstone, Planning Manager for Bloor Homes, Western Region

We all got together on a freezing cold afternoon to have the opportunity to meet one another and answer any queries anyone had and to see the site.

We had hoped the application would have been approved in November 2023 so work could commence in January 2024. Unfortunately, Planning at WODC has still not approved this so work is now delayed. In the meantime, Bloor Homes has taken down the blue hording boards and replaced it with Heras fencing and scraped the site level.

If you would like to see the schematic of what the Play Park will look like then please do not hesitate to contact me through my email.

To find out more about the play park, email Wendy via w.way@brizenortonparishcouncil.co.uk.



Brize Norton Football Club

Simon Cook

We are pleased to report that after the very tough start to the season and only 1 win in the first 7 games we have now picked up 5 wins.

Currently we are sitting in 10th place (out of 14) on equal points

with 8th and 9th place. It is a very competitive league with 1st and 3rd both having lost 4 games and top spot 10 points above us.

Our current record:

Pld 14 W 5 D 1 L 8 F 40 A 66 Pts 16

Top Scorer in Division 1 at present is our own Dylan Briggs with 16 goals and Joe Hatt in 3rd place on 14.

Some notable results were two great away wins 6-5 v Chadlington and 3-2 v Cassington and a 4-2 home win v Witney Royals. At 1 nil down Louis Alonzi saved a Royals penalty which gave Brize the belief to go on to win. This match saw Brize field a squad with one 16 year old and seven players aged 18 and 19.

Off the field the Club has had a trip to Cheltenham races in November and Christmas drinks.

Things are definitely on the up both on and off the field and we look forward to the second half of the season.

Contact Brize FC at pitchero.com/clubs/brizenortonfc
Facebook Group: Brize Norton FC
Twitter: @brizenortonfc
Instagram: brizenortonfc



Minster Lovell Cricket Club at Brize Rec

Chris Jones

When it's cold, wet and dark outside, playing and watching cricket can feel a distant thought. However, for Minster Lovell Cricketers, our pre-season started in mid January with Winter Nets at Carterton Community College on Monday evenings.

The League Fixtures for the

senior teams have been released and all age groups are looking forward to another full season of matches. These can be found on cherwellcricketleague.com/ with our 1st XI playing in Division 2, 2nd XI playing in 6B and the 3rd XI in Division 8D. The Senior League and Youth Fixtures commence in early May and these will be preceded by warm-up matches and the preliminary round of the Village Knock-Out cup in April.

Like last year, we are expecting Wash Meadow to need a few weeks of warmer days to dry out and for the wicket and outfield to be prepared. As a result, the club intends to play all of our early matches at the Recreation Ground in Brize, which tends to dry out much sooner.

In addition, the 3rd XI play all their home fixtures on the Rec in Brize and we are expecting some of Oxfordshire Youth Teams to use this wicket over the summer, which will provide trade for local businesses around the village.

Minster Lovell Cricket Club welcomes all players and if you are interested in playing, then please get in touch

To contact the Minster Lovell Cricket Club, contact Chris Jones via chrissarahj@yahoo.co.uk

Did you know there is a Netball Team playing in Brize Norton?



Ready for our next Issue out in May, we will be talking to Bonnie Brookes to find out more about the squad, their matches and hopefully a bit of a results round-up!



The Humble Bumble

Krystina Reape

“Village cafés are about far more than coffee and cake.”

Conversation. Community. Connection.

Three words that are at the heart of the Humble Bumble ethos.

One of our favourite things to do, is listen to the buzz and hum of voices that fill the air inside the café each day. Snippets of conversations taking place between strangers reaches our ears while we make your coffee and we often smile to ourselves, knowing that connections are being made within our local community and beyond.

Village cafés are about far more than coffee and cake.

They are a safe space to socialise and engage with other people. Humble Bumble is a place where you can chat with our friendly staff and the ever growing group of regular faces who are always in and out between work, school and errands! Even the fleeting interactions between people as they come and go can

make a difference and have a positive impact on someone's day. Our hope is that every single person entering the café, leaves with a slightly stronger sense of belonging to this amazing community.

Over the next few months we have various community clubs and activities happening inside the café, so have a read and mark the dates in your diary!



Chatty Café. Every Tuesday between 10am and 12pm, we host a Chatty Café table, which is facilitated by the wonderful Fiona. This table is open for anyone who wants some company and conversation, while we provide you with free tea, coffee and a warm space to meet people.

Craft Club. Every Thursday between 10am and 12pm, this

fabulous group of local crafters meet up, bringing their own projects that they are working on, helping each other to learn new skills, and enjoying each other's company. Anyone with a passion for crafts is welcome to join in!

Scam Awareness Talk. Mandy from Age UK Oxfordshire will be visiting the café on **Wednesday 13th March** to give a talk about Scam Awareness & Prevention. There is no age limit on who can come and listen, so if you want to know more about this or learn how you can support vulnerable people in our community, come along and have a listen.

We have a small, but dedicated, team of staff and volunteers who would love for you to pop in and say “Hello!”

Our current openings times are:

- Tuesday 9am to 4pm
- Wednesday 9am to 4pm
- Thursday 9am to 4pm
- Friday 9am to 4pm
- Saturday 10am to 3pm
- Sunday 10am to 3pm

To find out more about what's going on at the Humble Bumble Community Cafe, visit their facebook page @humblebumblecafe



Brize Meadow Lodge Care Home

ideal carehomes

Frances Payne



at Brize Meadow Lodge whilst getting to know our residents and team members. All are welcome, just give us a call if you want to reserve a seat and we'll make sure there's plenty to go around.

We have an open-door policy, so if you have any questions about our home or our community events, please pop in for a cuppa and a chat!

You can also find all our regular events on our Facebook page by searching Brize Meadow Lodge Care Home or scanning the QR code above.

Looking forward to seeing you all soon!

To contact Brize Meadow Lodge, call 01993 323 313 or email brizemeadow.lodge@idealcarehomes.co.uk www.idealcarehomes.co.uk

An open letter to the Brize Norton community from Frances Payne, Home Manager at Brize Meadow Lodge Care Home

On behalf of us all at Brize Meadow Lodge, I would like to thank everyone who joined us for our first Christmas and New Year celebrations. Beautiful memories were shared and made and being surrounded by our community made it all the more special.

In the year to come, we have lots of events that we're sure you'll all enjoy.

Every Wednesday from 10:30 until 12:00, parents and tots are

welcome to come along to Stay and Play for a morning of fun activities and sensory play with our residents at Brize Meadow Lodge. This is the perfect opportunity for generations to come together in a warm and safe environment, and our residents always enjoy little visitors! The kettle is always on, and we have the most delicious cakes on offer (if we do say so ourselves), so please pop by.

On the last Friday of each month from 12:30, we invite over 65's in the area to join us for a comfort food like no other and a British classic – fish and chips! Homemade by our fantastic kitchen team, guests can experience our fine dining



Bradley Brickwork Ltd.

A Local Family Run Business. All your building and brickwork needs Particular expertise in Stonemasonry.

More than 15 years of experience • Friendly and approachable

A quality job every time

07824 831113 • Office@bradleybrickwork.com



Jackie Hampson

It's been a busy first full term at pre-school.

It's been a busy first full term at pre-school. We've had visits from Chloe's Mobile Farm, Crocodiles of the World, the Police and Outside the Box travelling Pantomime company. Before Christmas we enjoyed a trip to St Britius Church with Gary Long and a visit to Humble Bumble Cafe for our morning snack and the Post Office to post our letters to Santa. We're looking forward to more exciting visits this term.

As we slowly move towards Spring we look forward to all the fun and learning that takes place on our allotment and outdoor learning area. The children have enjoyed feeding the birds and hedgehogs over the past months as well as making mud pies and potions and getting our allotment 'Winter Ready'. We hope to use some funds we raised before Christmas to allow us to buy a new shed for our allotment area as our old one is a little worse for wear having been in place for many years.

We are still to spend all of the money we gratefully received as a result of the fundraiser after our playhouse was broken into but have begun by ordering some new ride-ons for the children. We also plan on ordering a new play kitchen, accessories and table and chairs for the play house. Once again a huge 'THANK YOU' to everyone who supported pre-school with this.

Our pre-school is now completely full following four more children joining us from the start of January and will remain so for the remainder of this academic year through to July

2024. We have now allocated and confirmed all places for September 2024 through to July 2025. We have extremely limited availability from September 2025. With our village community continuously growing in size with the Brize Meadow development and the new government offer of funded sessions for two years olds from April 2024 our advice remains to register your child on our waiting list as soon as possible. A waiting list application can be found on our 'Registration page' of our website at brizenortonpre-school.co.uk

We will be holding **two open afternoons in June on the 7th & 21st from 1pm-2.30pm**. Please contact us to secure place by text / WhatsApp on 7769617697 or email us at brizenortonpre-school@hotmail.co.uk

Our pre-school operates from the Elderbank Hall, term time only. Our opening hours are Monday-Thursday 9am-3pm and Friday 9am-12pm

To contact Brize Norton Pre-School about places, open days or registration, Text/WhatsApp: 07769 617697 brizenortonpreschool@hotmail.co.uk www.brizenortonpreschool.co.uk



Image courtesy of Environmental Health Trust

Brize Norton Primary School

Robyn Jones

Here at Brize Norton Primary, we have had an eventful Autumn with lots of activities to inspire and engage the children.

Art Week

In November we held an Arts Week which had an environmental theme to coincide with One World Week.

Over the course of the week, children created artwork which depicted environmental matters which they had been learning about through their lessons. That week the children also learned about the impact our choices have on our environment and climate through a VR (Virtual Reality) workshop which the children all thoroughly enjoyed. In addition to this, and to celebrate Holi, they also took part in a Bollywood style dance workshop which again saw the

children smiling and engaged in a new experience.

We concluded the week by opening our doors to our families, for the children to share their work with their parents and extended families.

Year 6 Residential

In the depths of December, our Year 6 children went off on their residential to the Pioneer Centre in Kidderminster. These few days saw them challenge themselves to new experiences such as zip wiring, climbing and taking the feared 'leap of faith'. All of our children had the opportunity to SHINE and did so, coming back having forged stronger relationships and bonded for the year ahead. We are currently planning our next residential for our years 5 and 6 which will see them climbing Mount Snowdon in the Summer Term.

Christmas Fun

Christmas saw a flurry of festivities. It was wonderful

to open our doors to the local community, to share in some carols performed by our Upper School children. The children also performed a carol concert in the church and our choir performed in Humble Bumbles.

Our Lower School children and youngest Buccaneers did a superb job of performing their nativities to their parents and the school community.

This term, we are continuing to build on providing our children with rich and varied experiences. Our Upper School children are busily preparing for Young Voices which is a concert held in a variety of arenas around the UK, including the London O2 and the Birmingham Arena. Our children will be taking part in forming the largest school choir, ranging from 4,500 to 8,500 children,

"This term, we are continuing to build on providing our children with rich and varied experiences."

performing a medially of songs to a packed out arena. It's an exciting opportunity for our children to be apart of which we are all eagerly in anticipation of.

Tea and Chat – Monday, 25th March at 2pm – 2:45pm

If you are a member of the extended school community and live in Brize Norton, our School Council would like to invite you to our school to meet them and have a chat over a cup of tea about our school and get to know you as resident. .

If you would like to join our School Council for a cup of tea and a chat, please email the office at office.2250@brize-norton.oxon.sch.uk

To contact Brize Norton Primary School, visit their new website at www.brizeprimary.org

St Britius Church



Carolyn Peach

Thank you to everyone who has supported and helped us over the past three months.

We have had fund raising events with a second hand book stall at the Christmas fayre, a quiz and carol singing - thanks to the Brownies who joined us in singing and to the residents of Moat Close, Daubigny Mead, Squire's Close and the customers at The Chequers for their donations. We made up 25 boxes for the T4U Christmas shoe box appeal thanks to monetary and gift donations we collected from the church, school and village.

Our candlelit carol service was well attended; Saxophony accompanied the singing and the church looked beautiful decorated by flowers and flickering candlelight. Throughout December beautifully knitted models of Mary, Joseph, an angel, a donkey and a flock of sheep made a Posada journey 'lodging' at houses of parishioners and at Brize Meadow Lodge Care home before arriving at the church on Christmas Eve. At the end of the Christmas season we had an enjoyable Epiphany tea at The Humble Bumble Café.

We raise monies through various initiatives and would welcome

your support to keep St Britius a visible and permanent sign of the Christian community in the village.

We welcome everyone to a fundraising pancake supper evening on **Shrove Tuesday, 13 February in the church, from 6pm to 7.30pm.** Tickets are £7.50 per person entitling you to two pancakes (sweet and/or savoury fillings) and tea or coffee. Please book tickets in advance. We will also hold a raffle on the evening.

Thank you to everyone who has renewed their membership of the Friends and supported us over the last year. We ask for a minimum donation of £10 to help us maintain our beautiful historic building and keep it safe for future generations. For more details of all fundraisers please contact Phil (843856) or Carolyn (844102).

The Church of England's theme for Lent is 'Watch and Pray' and you can find out more or sign up for daily readings at the Church of England website.

We welcome you to join us for the following events and special services in the next three months:

- **Wednesday 14 February - Ash Wednesday Holy Communion and imposition of Ashes 7.00pm**
- **Mothering Sunday Service is Sunday 10th March, come to collect a posy.**

Our **Celebration of Easter** starts on **Palm Sunday 24th March with the 9.15am Holy Communion service** and then continues as follows:

- **Maundy Thursday 28th March Holy Communion at 7.30pm**
- **Good Friday 29th March Tenebrae service of reflection and prayer at 4pm**
- **Easter Day 31st March Holy Communion at 9.15 am.**

There is a weekly opportunity for you to join in fellowship and chat at the church **each Tuesday lunchtime, 12 noon to 1pm.** Please bring your own picnic style lunch. Please contact Phil Holmes for more information.

WORLD DAY OF PRAYER

I beg you, bear with one another in love

Friday 1st March 2024 is the World Day of Prayer.

The service this year has been written by the Christian women of Palestine.

The Methodist Church, Carterton are 'hosting' the local service this year which will be at 7pm. Everyone is welcome to attend.

For any further details of the church services refer to the notices on the church door or log onto the website www.bncommunity.org



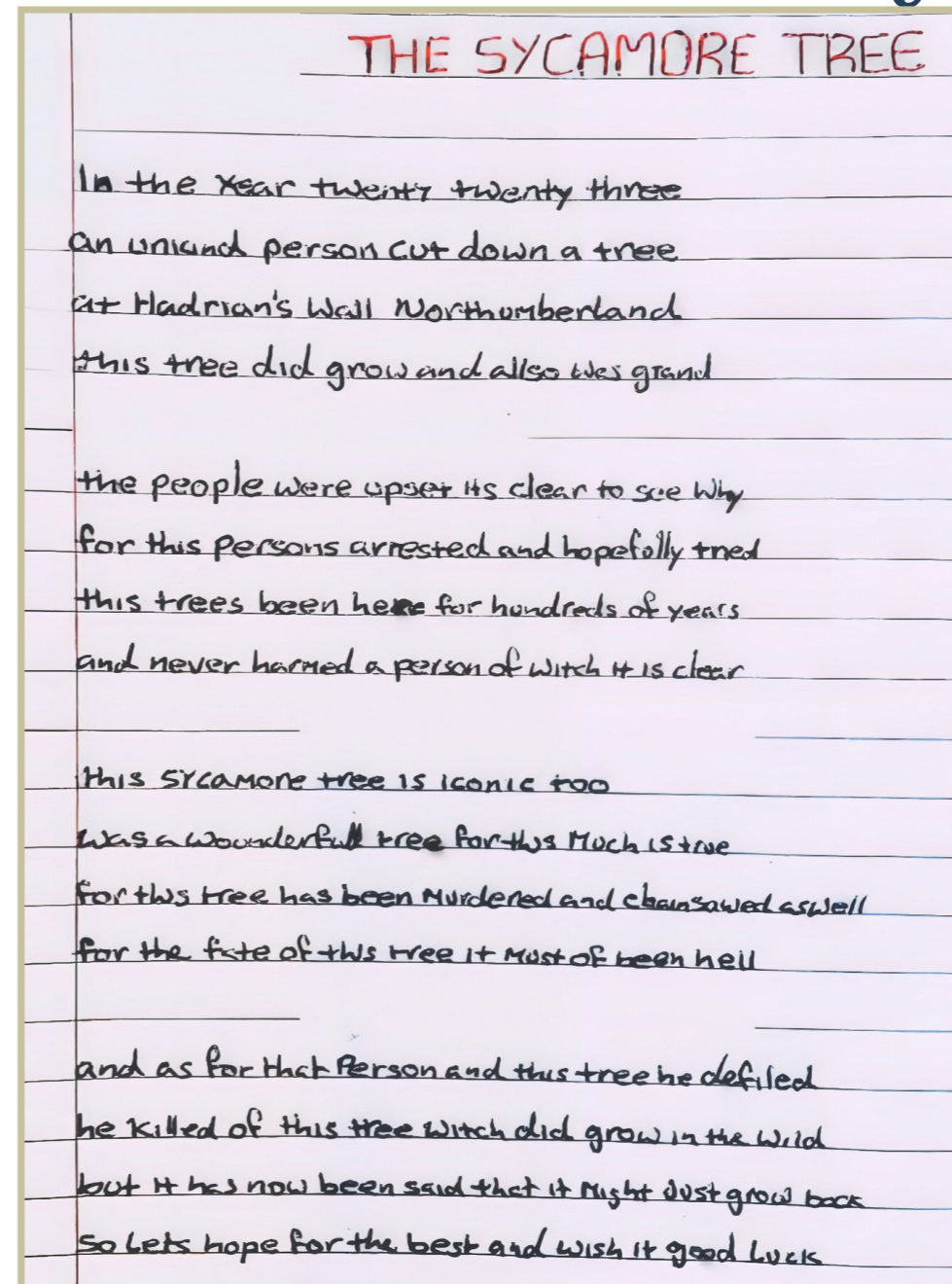
Barbie Thorne

First a **BIG THANK YOU** to everyone who helped in the November collection and a **HUGE thank you** to those who contributed to it.

This year, we raised **£1,201.96** (£200 more than last year) and for the first time people had the opportunity to pay with a

QR code and we're hoping this is what made life a little easier! Again thank you to everyone for their support. If anyone would like to get involved in this November's collection, we are always looking for people to collect door-to-door. The more of us there are, the shorter the rounds are. **Please let me know if you are available to help by calling me on 842013 or send a text message to 07853 778831.**

David's Poetry Corner



In this Issue, David writes about the loss of the famous Sycamore tree in Northumberland in 2023. You possibly remember too, that David also gave us a poem titled 'Wuthering Heights' in the previous Brize Breeze.

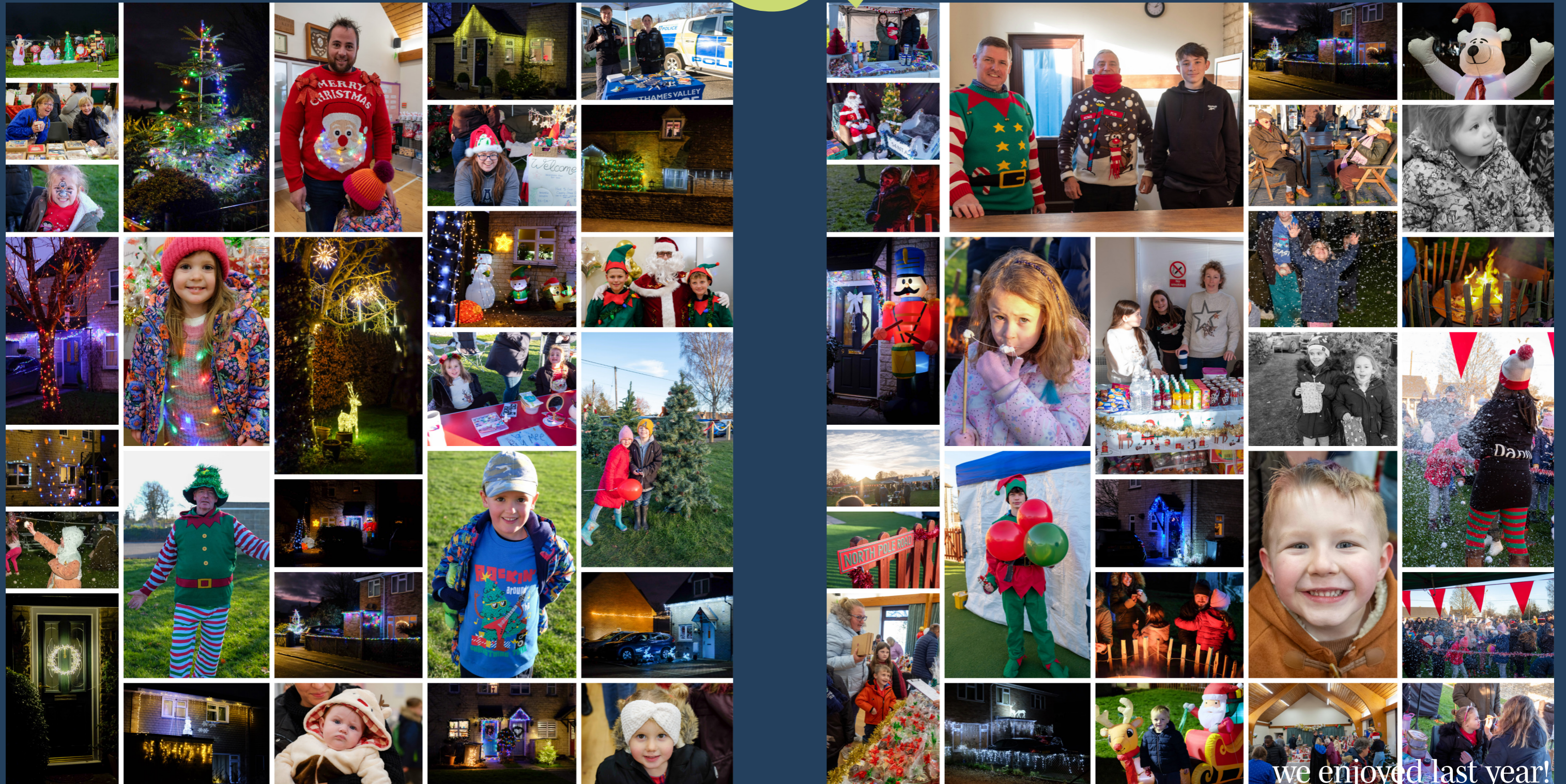
Thank you David!

David has lived in the village for a number of years and enjoys walking around the circular walk every day. He takes part in the Chatty Café and loves going into the Humble Bumble where he shows his most recent poetry.

Although a while away now, let's look back at the

CHRISTMAS Fun & Fabulous

Village lights



(View all the Christmas Market and Christmas Lights Photos at https://bit.ly/Brize_Breeze_Village_Photos)

Village Living

& The History of our people



What does 'Home' mean to you?

By Rosie Pearson

I was surprised to learn, on looking up the origin of the word home, that it comes from old English ham, meaning “dwelling place, house, abode, fixed residence, estate, village, region, country.”

So, not just a home, then? This definition makes me think of concentric circles, rippling out from the place we think of as our actual home, the place that we try to make as cosy and easy to navigate as we can, into the surrounding community and the wider world. In fact, as a Green who likes to see the connections between all things, I would like to add the word “world” to the list above.

If we are secure and happy in our homes, whether alone, in a couple, in a large family or group, we will probably *feel* more able to venture out. This might be to visit our local café (easy in Brize, where Humble Bumble specialises in making everybody feel welcome); pop on a bus into town (not so easy in Brize nowadays, but we hope that will be changing soon); or indeed to travel the world. It is so much easier to feel at home in unfamiliar surroundings and with people whose customs are different to our own, if we have a safe and welcoming home to return to.



Many of our traditional homes are lovely to look at, but very expensive to maintain and keep comfortable. For those living in these, as well as in those built in the last century, there is support in our county that will help to cut bills and make homes warmer in winter (win-win). Cosy Homes Oxfordshire is a good place to start, because they have already done some of the groundwork of looking at the various types of homes. (<https://cosyhomesoxfordshire.org/homeowners/>).

If our homes are a source of comfort, rather than anxiety, we can leave them with confidence to take part in our community. This is one reason why it is so important that everybody does have a home that is safe, warm and secure, both financially and structurally, and that any new homes that are built should be built with energy-saving, community and connection to nature at the top of the list of necessary features. The ongoing process of completing a Neighbourhood Plan, skilfully steered by your Parish Council, is designed to make sure that these principles are followed.

[For those who are looking for ways to venture out from their homes and join communities, there are so many choices nowadays. Oxfordshire Community Action Groups (CAG) says that 1 in 12

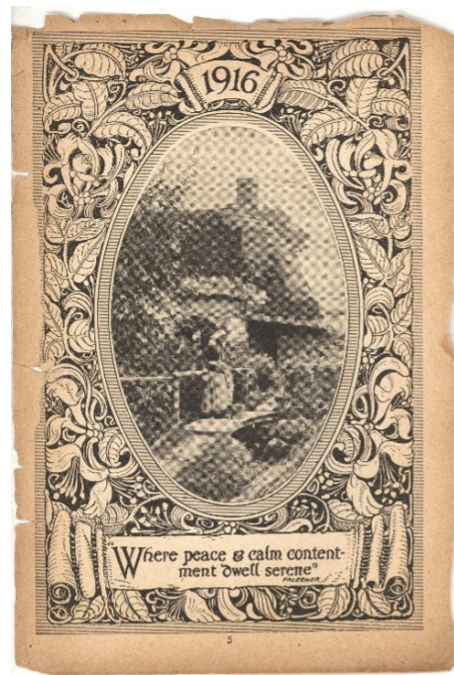
people in the county engaged with one of their groups during the past year. The range of what these groups are focused on ranges from energy saving to nature recovery to repair cafés to food banks to combatting loneliness. You can find one near you at cagoxfordshire.org.uk/.

Brize Norton, I have discovered during the year and a half that I've been your District Councillor, does 'community' in its own special way.

Considering the linear nature of the village, it is a triumph that the Open gardens and the recent garage sale have been such a spectacular success. The Open Gardens also revealed that Brize residents are taking really seriously the challenge of providing homes to our non-human friends. Hedgehog and bug homes, and wildlife-friendly gardening, where the beauty of some less tidy areas was celebrated, were a huge feature of the day.

In the end, our ultimate home is this unique and glorious planet. Let's look after that, too.

To contact Rosie, email Rosie.pearson@westoxon.gov.uk or head to her social - FB search 'Rosie Pearson Councillor' Twitter: [twitter.com/ RosiePearson59](https://twitter.com/RosiePearson59)



The History of Brize Norton

POPULATION & OCCUPATIONS

and Holy Days 8 a.m.; Martins 11; Evensong 6.30. Primitive Methodist Chapel, services 2.30 and 6 p.m. Lords of the manor, the Dean and Chapter of Christ Church, Oxford. Population in 1901, 687; in 1911, 511. Schoolmaster of Council School, E. M. Williams. Post town, Bampton. Letters arrive at 7.20 a.m. and 3.50 p.m., despatched at 9.20 a.m. and 6.45 p.m. weekdays only. Post and money order office. Nearest telegraph office, Bampton. Carrier, W. Winfield, to Witney and Oxford, Thursdays and Fridays. An omnibus from Burford to Bampton Station is run daily (Sunday excepted) meeting the 9.50 to Oxford in the morning, and the 7 p.m. from Oxford and Fairford, returning to Burford.”

42 names are listed:

- Akers Lucy, beer retailer and shopkeeper
- Badger W., farmer, Grove farm
- Barnes A., the Poplars
- Barnes and Son, baker's & grocer's stores
- Barnes William, grocer, Chichester house
- Bellenger H., haulier
- Bright J., farmer, Astrop farm
- Castle Edward, farmer; Manor house
- Drinkwater W. F., milkman
- Field Caleb, assistant overseer
- Fowler W., junr., Glebe farm
- Gillet Miss, Fern cottage
- Hoskins James, farmer, Kilkenny farm
- Kekewich Major C. H., the Firs
- Knight Miss. Acacia lodge
- Lock John, Carpenter's Arms
- Lott Mrs, the Cottage
- Mills Annie, dressmaker
- Mills Isaac, carpenter
- Morley Edward, farmer and landowner Marsh Haddon
- Morley William, farmer and

- machinist
- Packer John. carpenter
- Powell D. H. W., surveyor, the Limes
- Pratt Mrs, Chequers
- Print A. E., blacksmith
- Pratt Thomas farmer, Haddon farm
- Silman Miss Elizabeth; shopkeeper
- Slade John, the Quarry
- Smith H., family butcher
- Sturch W., farmer, the Grange
- Sturges Rev. T. W., the Vicarage
- Taylor Frederick, carpenter & machinist
- Thatcher William, dealer
- Timms Charles, mason and farmer
- Timms R., cycle repairer
- Wilkins Charles, farmer, Sturt farm
- Williams E. M., schoolmaster
- Winfield William, carrier and grocer
- Winfield Thomas, haulier
- Winfield Edward, haulier
- Worley Misses, the Street
- Worley Miss R., postmistress

Interestingly the entry for Carterton has 129 names listed! The list can be found at bncommunity.org/history/almanac/1916_almanac.htm

This led me to explore two avenues. The first is the growth of Brize Norton over the years and the second is the nature of employment, what jobs did people do.

The Population of Brize Norton

In 1911 the population for Brize Norton and Lew was 627 (553 in Brize Norton itself). The evidence documents for the Brize Norton Neighbourhood Plan (Appendix 06 Document C) provides a

breakdown since 1086. I have produced a graph below.

The 2001 figure has been adjusted because RAF Brize Norton was included with Brize Norton and there have been boundary changes. In more recent years Brize Norton and Shilton are taken together. (previously Brize Norton was taken with Lew). Up until the 1950's the population was below 750, new housing development led to a modest increase whilst the steep rise at the end reflects the ever growing Brize Meadow estate.

People's Occupation

The directory listing in 1916 Almanac gives a flavour demonstrating a very rural farming community. A detailed analysis of the 1911 census and the 1939 Register reveals precise information.

In the 1911 census we find 316 men (215 in employment) and 311 (197 in employment). By 1939 this reduced to 205 men (160 in employment) and 202 women (72 in employment. Those not in employment includes children, pensioners and housewives. The following list uses the coding scheme mentioned below.

- Category 2: school teacher, solicitors, road surveyors and clergyman
- Category 3: armed forces, police,

- commercial traveller
- Category 4: wages clerk, postmaster, assistant overseer, business assistant
- Category 5: allotment holder, bailiff, farm waggoner, farmer, hay tyer on farm, small holder, gardener, game keeper, blacksmith, mechanic, mason, bricklayer, builder, upholster, tailor, baker, butcher, carpenter, etc.
- Category 6: groom, horseman
- Category 7: grocer, salesman, fruit and fish merchant
- Category 8: threshing machinist, wool spinner, mill hand spinner, stoker machinist, car worker, haulier, permanent way worker, lorry driver, traction engine driver, signalman, plough boy, traction engine driver, etc.
- Category 9: labourer, cattleman, shepherd, carter on farm, coalman, metal worker, storeman, poultry worker, etc.

For example in 1911 there were 46 farm labourers (17 in 1939), 12 carters on the farm (10 in 1939) then there were shepherds (8 in 1911, 3 in 1939), cowman, cattlemen, undercowman (9 in 1911 and 8 in 1939). A full breakdown is available on the community website.

Recent census information for 2001, 2011 and 2021 is available in summary form (the detail is covered by the 100 year rule. i.e., the detail won't be public until 100 years on). The 2021 census uses a coding scheme known

as the National Statistics Socio-economic Classification (NS-SEC) 2020 Coding Scheme (also known as soc2020). This has nine major categories as follows.

1. Managers, directors and senior officials (Includes production managers and directors; managers and directors in retail and wholesale; chief executives and senior officials)
2. Professional occupations (Includes teaching and other educational professionals; information technology, professionals; nursing and midwifery professionals)
3. Associate professional and technical occupations (Includes sales, marketing and related associate professionals; artistic, literary and media occupations; welfare and housing associate professionals)
4. Administrative and secretarial occupations (includes secretarial and related occupations; administrative occupations in finance)
5. Skilled trade occupations (includes construction and building trades; food preparation and hospitality trades; agricultural and related trades)
6. Caring, leisure and other service occupations (includes caring personal services; teaching and childcare support occupations; hairdressers and related services)
7. Sales and customer service occupations (includes sales assistants and retail cashiers; customer service occupations)
8. Process, plant and machine occupations (includes road transport drivers; process operatives)
9. Elementary occupations (includes elementary cleaning occupations; elementary storage occupations)

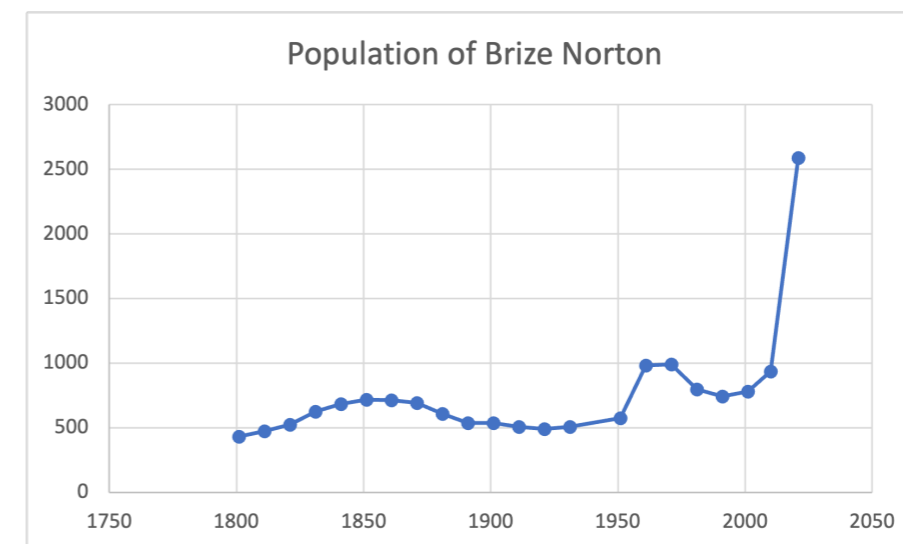
In order to show the trend over the 100 year span, I have applied the coding scheme

Dr Phil Holmes

This issue Phil focusses upon the Population and Occupations of Brize Norton over the years...

The 1916 Almanac covers the Vale of the White Horse. The directory provides information for Berkshire and Oxfordshire and includes information for Brize Norton and Carterton. The entry for Brize Norton reads:

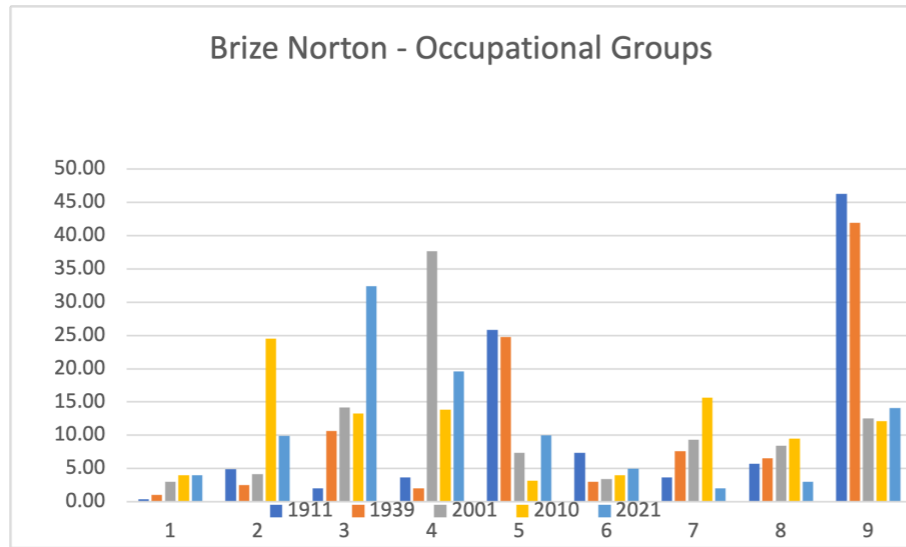
“Brize Norton (Oxon), is a parish and village in the hundred of Bampton, union and county court district of Witney, rural deanery of Witney, archdeaconry and diocese of Oxford, 4 miles from Burford, 4 from Witney, 9 from Faringdon. and 1 from Bampton station, G.W.R. Place of worship – The Church of St. Britius. The living is a discharged vicarage value about £216 net, with residence. Patrons, the Dean and Chapter of Christ Church, Oxford. Vicar, Rev. T. W. Sturges (appointed 1912). Parish clerk, Richard Smith. Hours of Divine service, Celebration of Holy Communion, Sundays



retrospectively for earlier census's.

The graph across shows the breakdown by occupational groups (1 to 9 as above) for the years 1911 (dark blue), 1939 (brown), 2001 (grey), 2010 (yellow) and 2021 (light blue). The bar charts are in percentages of the working population.

Closer examination of the data shows the marked changes in the workforce. In 1911 and in 1939 three quarters of the working population were in agriculture. Today there is a notable shift towards "desk bound" jobs. Many people are now in more qualified, higher paid work. There were fewer people "on the land" by 1939 and signs of more



mechanisation. Obviously the two world wars had their effect.

The significant growth in the population and the change in jobs are indicators of real change. It is not surprising that the older

generation comment about the change!.

To contact the Dr Phil Holmes
email: p.holmes@brizenorton.org
or call 01993 943856

Journey to a happy healthy community

My Story of Connection and Contribution



By Molly Champion

Understanding what it means to be a happy and healthy neighbour has been quite the adventure for me. I've lived in 15 different houses by the age of 20, from military bases in places like Cyprus, Kinloss, Brize Norton, Catterick and Colchester, to a farm in North Iceland, a boat in Falmouth, and even a mud hut on a compound in Zambia for three months. I've called my beloved campervan home for six months and have been residing in the Western Lake District for the past five years. Each of these places had its own unique charm and opportunities, but what always made me truly cherish a place was the sense of community.

In Iceland, I was attending an Icelandic language school, teaching swimming at the local pool, and joining crossfit sessions at the village hall. In Zambia, it was attending church every Sunday, teaching in the local school, running events in the village, and in the Lake District, it was the people and the sense of belonging that truly won me over. It wasn't until I actively participated in community activities that I felt a deep connection to the area. Knowing people in the community, walking into a quaint church at the foot of Scafell Pike and being met with the dreaded question "are you on holiday?" - I'd often counter by asking for the name of a regular church goer who had lived in the valley for three decades and attended my

mulled pie and minced wine night the week before (yes, I swapped the letters around, why not?). It gave me a sense of satisfaction, for better or for worse.

My journey into community involvement began when I accepted a 16-hour-a-week contract to deliver free health and well-being sessions to the community. This involved driving a van larger than my trusty campervan, booking halls, writing funding reports, and marketing the project to the community. With a background in marketing and recently deciding to go full-time freelance, this gig seemed like a safe and convenient option, and as usual, I dove headfirst into it. I met numerous

people, connected with other third-sector organisations, and even signed up for volunteer schemes that funded my training in presentation skills, lowland leadership, mental health first aid, safeguarding and climate awareness. Being connected to a third-sector organisation in Cumbria focused on healthy and happy lifestyles opened doors I didn't know were there.

I used the project budget wisely, paying full fees for community halls and running programmes in lesser-known venues. catering to overlooked community groups like the home-ed community, which turned out to be much bigger than most people realised in Cumbria. Alongside this role, I was remotely working on my MSc dissertation and several other freelance projects, often feeling overwhelmed. But the positive feedback from the community, their desire for more programmes like the ones I was running, gave me a deep sense of purpose.

This journey eventually led me to deeper involvement in third-sector and community-engagement projects, where I began to recognise the powerful connection between community engagement and effective digital marketing. I saw how effective social media outreach could attract people to our events and how collaborating with community halls boasting a strong following could add immense credibility to our initiatives. These programmes were loosely based on a prior publication called 'Happy Healthy Neighbours,' which, although well-intentioned, needed a revamp to make it more engaging. We successfully secured funding to upgrade the guide, meticulously tailored to the community we were serving. In collaboration with a local lino print designer, we ensured that the guide was deeply rooted in

the community's identity. This comprehensive guide focused on five essential aspects of living a healthy and happy lifestyle, offering valuable well-being insights, monthly planning, crucial local contacts, information about nearby walks, healthy recipes sourced from the local cafe, and even details about the limited public transport options in the Western Lake District. This guide was not just a resource but a roadmap towards a more accessible and happier life - "Live Well in 5 Steps".

As the daughter of two dedicated community-minded individuals, B&B Champion, I've long understood that being part of a thriving and joyful neighbourhood starts with what you contribute to the community. Similar to tending to a garden every day, the sense of pride you feel in your community is immensely greater when you actively participate. Yet, it goes beyond that; you can't invest in something if you don't invest in yourself. This involves healthy living, staying active, and maintaining a balanced diet. In our 'Happy Healthy Neighbour' guide, we delve into managing *blood glucose levels and offer practical tips, such as starting with something savoury before indulging in treats to avoid glucose spikes.

Additionally, staying physically active both before and after meals is always a good rule of thumb, as it plays a vital role in helping to regulate your blood glucose levels.

Building and nurturing meaningful connections is the adhesive that binds thriving communities together. Within our 'Happy Healthy Neighbour' guide, we placed great emphasis on the significance of strong relationships. Research, such as the *Harvard Study of Adult Development, underscores the profound impact of these

connections on our well-being. These connections are not mere names on a list; they are the individuals who enrich our lives with depth and warmth. Whether they are family, mentors, close friends, or healthcare providers, these connections form a supportive network that equips us to face life's challenges with greater resilience. Remember that the key to serving meaningful connections better is genuine sincerity and a willingness to invest time and effort in nurturing these relationships. Small acts of kindness and thoughtful gestures can go a long way in deepening your connections with others

Balancing life's demands can be challenging, requiring discipline and self-compassion; in our brief existence on this planet, active participation in our communities, outdoor adventures, laughter with friends, and cherished family time are vital. Embracing a sense of pride in one's life leads to the organic development of healthy habits, and it's when you align with your values and envision the life you desire - no matter how ambitious - that the chaos of day-to-day life finds a greater meaning and purpose. If not, at least you've tried!

Footnote: This article was authored by Molly Champion, Founder and CEO/ MD of Champion Creative, specialising in 'Creative Solutions for Community Engagement.' Molly resided in Brize Norton for four years before relocating, while her parents, Ben & Bev Champion, lived in Brize Norton for seven years, during which they established the Humble Bumble Cafe. Although Molly has since moved away, she continues to offer support to Jayne on Chapel Hill Design projects and maintains life-long friendships with residents in and around Brize Norton Village.

*For more detailed science-backed insights and references, visit: glucosegoddess.com/science <https://adultdevelopmentstudy.org/>



But just how effective are they... really?

An Anonymous Writer

I was sat in traffic for the umpteenth time that week. Lights way ahead of me, weaving their way along the road, like a caterpillar.

I looked to my left and noticed a warning sign showing the picture of a hedgehog. "That's new" I thought, at the same time of thinking (sadly) what chance a hedgehog had on this road, at night, when people don't actually stick to the speed limit anymore.

As I drove a little closer to the sign I looked down and noticed an installation number and date

'MARCH 2018'

I've been driving this way for years and never once noticed this sign! I instantly felt guilty that I'd not been adhering to it's instructions, but then thought if I'd missed this sign, how many others would have done the same as me? Are we seeing so many signs that we've become 'blind' to information in front of us because of our almost 'automatic' mode when driving to and from work, to and from school, to and from the shops, to and from the gym...

Still sat in traffic and ignoring the noise on the radio, I started to think of my village that I live in; that we all live in, Brize Norton.

I remember the installation of the 20mph signs. The literal 'marmite'

view that people had of them!

I smiled because I remember when they were first installed, they had black paint over the top to cover over the number. I was so desperate to try to get people to slow down, I wiped off the paint, so people could start to see them now, rather than wait for contractors to turn up.

20 miles per hour. The thought of people driving that speed through our village made me happy.

Cars fly past our house, day and night; everyone in their own world, finding a reason behind why they should just go that little faster today or in some cases not even bothered about going fast as it's not their village/town and

to ignore them.

I saw a pheasant that had been hit by a car on the Burford Road leading to Monahan Way. At the time, it made me wonder how would that happen if a car was going the speed limit?

I watch children coming out of the front gate at the Primary School, stepping within a foot of oncoming traffic onto the pavement as cars rush by on their way home from work, and I continuously worry that one more step and they (or the adult trying to protect them from the road) would literally be in the road and in front of that speeding car.

Would that car be speeding if it was their family or friends within a foot of their car?

I know there's no quick answer in how we go about getting people to take notice of the signs in front of them, or even how we make signs more

noticeable (I mean look at me with the hedgehog sign). I also know that the only time anyone really looks at signs is if they are lost and needed to find their way to a place or if they are heading out for the day and are following the attraction or 'to the beach' signs.

I just wish that we could appeal to the good nature in everyone (desperately hoping there is one in everyone) that walks through, drives through, cycles through or even lives here, works here.

Appeal to their good nature and say:

"I know you are busy rushing here and there, but did you take a minute to notice the sign up there?"

"That sign that says, please slow down, please pick up after your dog, mind the roadworks or

beware - prone to fog (*does that one even exist?*)

"I understand that you can sometimes be 'blind' to these things, and thinking more about what your day ahead brings.

"But just for my sake and for everyone who lives here, would you just take a moment to consider..."

"What if the worst were to happen some day and a child, older person or an animal got in your way?"

"Would your first excuse be to the police, your boss or your family, I'm really so sorry, so sorry as I can be, there was a sign there that I simply didn't see".



To be the Villager's Voice in future issue's or to submit an article, please contact Jayne via email jayne@chapelhilldesign.co.uk



Ady State

Brize Norton Wildlife

Looking back over previous 'State of Nature' articles I realised I had never discussed the wealth of nature that can be found in our own parish.

With that in mind I went over my own records since moving to the village over three years ago.

On that first day whilst breaking for a cuppa between carrying furniture into the house, I spotted a sparrow hawk, sitting in a tree at the bottom of my garden and a few seconds later saw it swoop down and kill a pigeon.

I remember thinking to myself, 'well at least there is plenty of wildlife here'.

I duly entered sparrow hawk as the first entry in my new garden bird log, followed by the unlucky pigeon.

That log is now up to 57 species, not bad for a small garden. My tally for the parish is 87 birds which is pretty good for what is a relatively small area.

I also tally mammals in the area

which stands at 24 species with the most unusual sightings being an otter (unfortunately dead) along the Buford road near to Crocodiles of the World.

Surprising to find it so far from water, but they are known to travel many miles overland. Another animal I saw recently is not rare but hard to spot and that was a mole that was travelling above ground after being driven out by rising flood water.

Some of the animals such as squirrel and hedgehog are regular visitors to my back garden as are the six different bats I recorded there with my bat detector during summer evenings. I sometimes sit out in the fields on dark evenings and watch badger, foxes and roe deer.

Some animals seem to show an increase in numbers since I came here, notably hedgehogs and hares, which I am sure is due to more enlightened practices by our local farmers and by people making provision for hedgehogs in their gardens.

What about other creatures?

Well I have had three species of amphibian in my tiny garden pond with frog, toad and common newt all appearing in the last

year. Out in the fields I have seen slowworm, grass snake and common lizard which is pleasing

“... well at least there is plenty of wildlife here”

as all three are declining in the county.

I don't bother to record every insect I see but I have recorded butterflies and some of the larger moths I see and the past year has been a bumper year for them with huge numbers of red admirals along with fritillaries, clouded yellows and other less common species. At one point in my garden five humming bird hawk moths could be seen!

Seven species of dragonfly visited my small pond and hopefully some of their larva are overwintering in their right now.

I haven't even mentioned plants and wild flowers...

So with this plethora of wildlife around us why not make 2024 the year you get out on the footpaths around the village and make your own observations of wildlife.

It is a great way to keep fit and unwind, with so much to discover!

Get in touch with Ady via a.state@brizenortonparishcouncil.co.uk



Debbie Ryan

Cotswold Wildlife Park is one of the largest zoological collections in the UK, with over 1,500 animals from 250 different species. As part of the Park's commitment to its breeding programme, the family-run Burford attraction recently introduced two new males to their prospective partners. A young Wolverine named Bigfoot and a Red Panda called Wing. It is hoped that in the future, they will successfully produce young of their own and continue the next generation of rare and endangered species at the wildlife park.



Curator and General Manager Jamie Craig explains:

“We have been extremely successful over the years with our breeding record at the Park, but nothing gives us greater satisfaction than watching the next generations develop. This is certainly the case with two of our more notable species at the Park, our Red Pandas and Wolverines”.

The Next Generation



He added: “Our current Red Panda female, Iris, was born in 2021 and is the daughter of our prolific pair Scarlet and Doodoo. She has recently been paired with a young male, Wing, born last year, from Munich Zoo in Germany. The two are now pretty much inseparable, and their very

public displays of affection give us real hope they will go on to be as successful as her parents.

However, affection is certainly not a word that can be used for the Wolverines. Our original pair, Sarka and Sharapova, were the first Wolverines to breed successfully in the UK and when they finally succumbed to old age, the Park lost two of its most colourful characters. We retained a daughter, Tik, from their final litter in 2018 and she is now



Credit: Philip Joyce

joined by Bigfoot, a young male from Chomutov Zoo in the Czech Republic. Although, unlike the Red Pandas, we could never describe Wolverine pairs as inseparable (in fact, cantankerous may be more befitting the species), the two are now cohabiting as peacefully as Wolverines can. We eagerly await the patter of tiny but viciously clawed feet in the future – watch this space!”

The Park's Wolverines can be seen in their woodland enclosure in between the aviaries and the Park's Train Station. The Red Panda outdoor exhibit is next to the Oak Tree Restaurant.

FACTS

- Cotswold Wildlife Park made history in 2012 as the first collection in the UK to successfully breed Wolverines. Breeding is notoriously difficult with this species.
- The Wolverine is a powerful animal that resembles a small Bear but is actually the largest member of the Weasel family.
- In 1972 Cotswold Wildlife Park welcomed its first Red Panda. They have since become one of the most popular animals in the collection and have graced the cover of the Park's official guide book many times. BBC's Live 'n' Deadly TV series named Red Panda male Doodoo one of their “favourite animals ever”.
- Red Panda Iris was named in honour of Iris Bower – one of only two RAF nursing sisters to land on the Normandy Beaches in June 1944 to establish a field hospital.

The team at Cotswold Wildlife Park & Gardens have very kindly provided **OUR BIG COMPETITION** for this issue!

Check out Page 35 for details!

To keep up to date with the Park's news, please visit www.cotswoldwildlifepark.co.uk.



Croc's Corner

on behalf of Becky Mansfield

Did you know that in December 2022, Crocodiles of the World opened a brand new exhibit called 'Clouded Forest' which is now home to a pair of Clouded leopards - a female named Bao and a male named Ming. They love nothing more than a lie in and frequently be

seen on the video snuggling up together, especially on these Winter mornings!

On the 10th February, Crocodiles of the World will be opening up a brand new area at the zoo, which further gives COTW the opportunity to educate everyone about the importance of conservation of this amazing species...

Would you like to know more?

As it was a top secret project, we were unable to print the full details. However, after this weekend, you will be able to go online and on their facebook page to find out more and of course, you can always go and visit them by booking tickets online via crocodilesoftheworld.co.uk

Shhhh... it's a secret...

We need to find a home for one of our friends!

Blue Cross, Burford

Thinking about a rescue pet... **Meet Lianna!**

Lianna is an older lady looking for a quiet home with few comings and goings, she loves being with human friends and would ideally be looking for a home where someone is around for a large portion of the day.

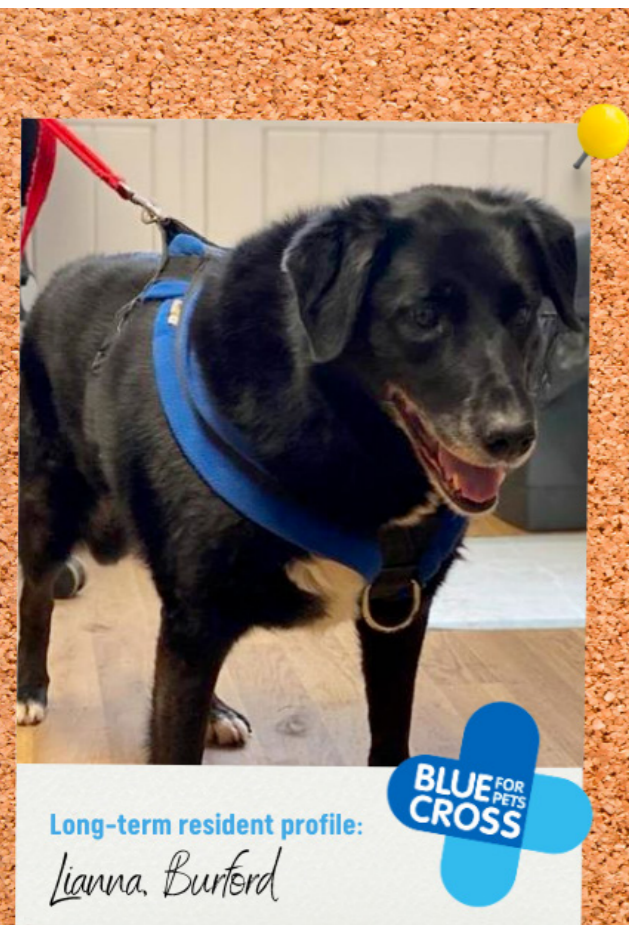
Lianna loves exploring the countryside and despite her age she is still very young

with fabulous energy! Here at the centre we have seen Lianna enjoy a quick hello with doggy friends, but she does not want to waste her time hanging around socialising if she has a walk to complete.

Lianna could share her home with older school age children who enjoy a game of ball in the garden (Lianna's favourite thing to do!)

If you have a space in your home for this young at heart lady then please apply for her today.

To find out more about them, go to: <https://www.bluecross.org.uk/rehome/dog>



Long-term resident profile:

Lianna, Burford

Tree Guardians Needed



Are you looking to become involved in county-wide tree planting and guardianship?

We've planted trees in every parish in Oxfordshire and we would love **YOUR** help to care for them!

Help water community trees!



- Approximately one watering can (10 litres) a day. In drought conditions up to two cans (20 litres) may be required
- Water early morning or late evening to avoid water loss
- Bath, washing up or rainwater can be used
- Avoid watering leaves and greenery



To sign up as a volunteer, seek advice, & find your local tree, email:

tree.planting@oxfordshire.gov.uk

Brize Norton Over 60's Club



We meet on the **1st and 3rd Tuesday of each month at 2pm.**

The first Tuesday we enjoy company and have tea, cake and chat at 4 Squires Close, Brize Norton.

On the **third Tuesday**, we arrange for a speaker or other activity.

Before Christmas we had a sing-a-long with Cliff and enjoyed a very good Christmas meal at The Masons Arms – thank you to Linda and her team.

Our future programme is:

- **Tues 20th February**
Sing-a-long with Cliff at the keyboard
- **Tues 5th March**
Tea, cake and chat at Joy's
- **Tues 19th March**
Lunchtime meal at The Masons Arms, meet at noon for 12.30pm
- **Tues 2nd April**
Tea at the Humble Bumble cafe

We would welcome new members or if you have an interesting job or hobby we would love for you to come and tell us about it.

For more information please ring Joy on 01993 842373.

Details of our programme are posted on the village notice board.

Ballroom Dance Club

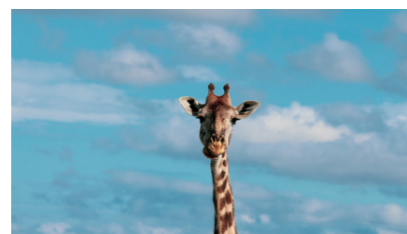
****For all ages****

We are a club meeting every **Thursday evening from 7.30pm to 9.30pm** in the Elder Bank Hall.

We dance ballroom, latin american and sequence dances to music on CDs. We enjoy a chat with tea and biscuits during an interval. Currently we have a membership of 40 and we would welcome any new members.

New members of all ages would be most welcome.

Please contact Joy on 01993 842373 for further details.



Allotments!

A quick reminder for that we have a few allotments becoming available soon! If you would like to have one, please **Email Jo Webb, Clerk of the Parish Council via clerk@brizenortonparishcouncil.co.uk**

Note: Picture for attention only.. we don't yet have giraffes living on the allotments



Brownies

We meet on Monday evenings at 6pm in Elder Bank Hall. We are a thriving group of girls who enjoy lots of activities and games that help us to learn new skills, work in teams and gain leadership skills.

We are looking for a regular helper as our numbers are growing. If anyone is interested in having fun Monday evening, please contact me **Barbie Thorne on 842013 or text 07853 778831** for more details.



Road works in Brize Norton

If you are looking for updates on road works being done in the village or surrounding area, keep an eye on our facebook page:

@brizenortonvillage

Temporary Traffic Regulation Orders, complete with diversionary route (where necessary) will be published when received into the Clerk's office.



SAVE THE DATE

Brize Norton Gardens

Open for charity • 23rd June 2023

All our Gardeners will all now be beavering away, busy manicuring their Gardens to look their best for this Charity event.

We're hoping to have 12 gardens open this year and as usual tea and cakes will be available at Elder Bank Hall in aid of the Church funds, as well as at Grange Farm, with parking at the Mason's Arms car park Burford Road.

We do hope that you will come along and enjoy all of these beautiful gardens, and don't forget to let us know if you'd like to open your garden next year!



Sunday 23rd June • 1:00pm to 6:00pm
Adult admission £7.50, Children's admission free





Village Bash

SAVE the DATE

Sunday 14th July 2024
1pm to 5pm

An afternoon of fun on the Recreation Ground in support of the school and local village organisations

More about the theme & activities will be published on the Brize Breeze Facebook page:
facebook.com/BrizeBreeze

- PRE-SCHOOL (Term-time only)**
Mon - Thu • 9am - 3pm
Fri • 9am - 12 midday
- BROWNIES (Term-time only)**
Mon • 6pm - 7.30pm
- WOODTURNING (WOWA)**
1st Tues (monthly) • 8pm - 10pm
- YOU CAN FITNESS**
Tue • 6pm - 7pm (Not 1st Tuesday)
- NERF CLUB FROM ACTIVE FUTURES**
Wed • 4.15pm - 5.45pm
- KARATE**
Wed • 6.30pm - 7.30pm
- 20:20:20 FITNESS CLASS**
Wed • 7.45pm - 8.45pm

- EYEKANDI FITNESS**
Thu • 6.00pm - 7.00pm
Sat & Sun • 8.30am - 9.30am
- BALLROOM & LATIN DANCING**
Thu • 7.30pm - 9.30pm
- YOUNG FARMERS**
Starting again on 12th Jan 2024
Every other Fri • 7.00pm - 9.00pm
- JUDO CLUB**
Sat • 9.30am-11.30am
- PENTHWELL DOG TRAINING**
Sun mornings • email for dates
- TOTALLY SHREDDED FITNESS**
Sun • 6.00pm - 7.00pm



Elder Bank Hall is great for private hire events, but our calendar is booking up!
Call 01993 622714 or email elderbankhall@gmail.com to hire 🍷

Elder Bank Hall Calendar

is sleeping HARD WORK?

At any given time up to 40% of adults and 50% of children (this rises to 80% with a SEND diagnosis) have difficulties with their sleep. Yet in a recent survey, almost 60% of adults felt there was a lack of support for sleep issues. Sleep problems can leave people feeling isolated and lonely.

Our free helpline is run by trained sleep advisors, many of whom are specialists in working with SEND. We can talk to young people directly, or parents (we can also talk to adults, including older people, about their sleep issues).

The helpline is open 5 times a week, Monday, Tuesday, Thursday evenings 7-9pm, and Monday, Wednesday mornings 9-11am. The number is 03303 530 541.

Information kindly provided by Brize Norton Primary School. Find out about the National Sleep Charity for both Adults and Children, Visit: thesleepcharity.org.uk/national-sleep-helpline/



the national **sleep** helpline

Does your child suffer with sleep issues?

Do you struggle with your child's bedtime?

Will your child not sleep in their own bed?

WE CAN HELP

03303 530 541

Monday, Tuesday & Thursday 7pm - 9pm
Monday & Wednesday 9am - 11am

WE NEED YOUR CONTINUED SUPPORT

98%* of UK post offices are privately owned with postmasters being self-employed investors in their own small business.



#SUPPORTLOCALFIRST

Our local post office is in:

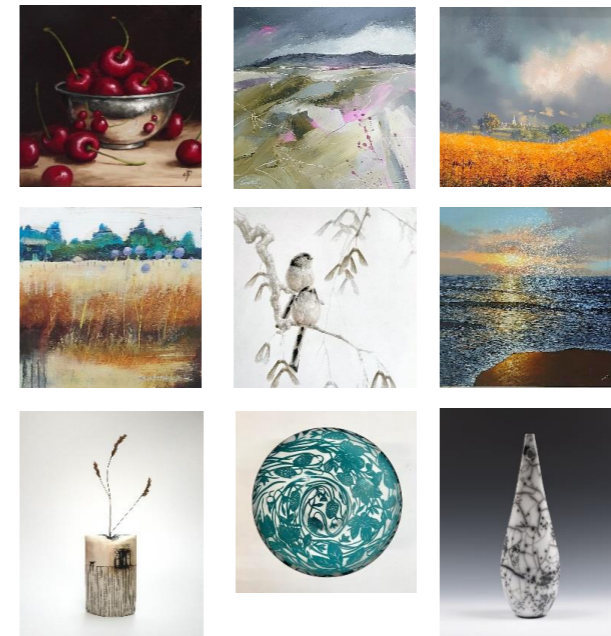
Sports Pavilion, Station Road, Brize Norton

Open Tuesday & Thursday
From 9.30am - 12.30pm

Drop and Collect at:

Co-op Food Store, Kipling Court, Brize Meadow, Brize Norton

Open Monday - Sunday
From 7am to 10pm



SOTA Gallery

SOTA GALLERY LTD

11 Langdale Court - Witney - Oxfordshire - OX28 6FG

Tel: 01993 862 799 Email: sotagallery@gmail.com www.sotagallery.co.uk

SOTA Gallery LTD, Registered Company Number 13560194 (England & Wales)

Witney Framing

Witney's only Picture framing shop, offers a high-quality bespoke & standard framing service; We also have a large stock of quality British readymade frames.

We frame original artworks, prints, certificates, medals, sporting memorabilia, family photos and keepsakes. Hundreds of frames to choose from, as well as a wide selection of mounts and glass. Read Our reviews & see why we are Witney's best.



www.witneyframing.co.uk

Full Framing Service • Readymade Frames Glass Repairs • Replacement Mounts • Fitting service • Military Items • Sporting Items • Mirrors

Tel 01993 862 799
11 Langdale Court, Witney,
Oxon OX28 6FG



Vicky's After School & Holiday Club Ltd

We provide After School Clubs at a wide range of schools as well as a School Holiday Club in Aston, that's open for everyone

We have After School Clubs at the following schools:

- Aston & Cote Primary
- Brize Norton Primary
- Ducklington Primary
- Freeland C of E Primary
- John Blandy Primary
- Marcham C of E Primary
- Windrush C of E Primary

vickysafterschoolclub.co.uk ☎ 07887 711454
info@vickysafterschoolclub.co.uk



AD ASTRA YOGA & PILATES

AD ASTRA YOGA & PILATES

VINYASA 7.10PM MON

FLEXIBILITY MOBILITY STRENGTH

PILATES 4 ALL 10.30AM TUE

PILATES FLEX 7PM WED

TIMETABLE

CARTERTON COMMUNITY CENTRE



BOOK VIA GYM CATCH

07968 344681
www.adastrayoga.org

FIRST CLASS FREE

THE VILLAGE DIRECTORY



LOCAL INFORMATION

- **Brize Norton Parish Council**
clerk@brizenortonparishcouncil.co.uk
- **St Britius Church • 846996**
- **Brize Primary School • 842488**
www.brizeprimary.org
School Governors
Alistair Doran • 07788 214 663
adoran@brize-norton.sch.co.uk
BNPS School Association
Emma Baughan
bnsa_fundraising@outlook.com
- **Brize Norton Pre-School**
Jackie Hampson • 07769 617 696
brizenortonpreschool@hotmail.co.uk
- **Brize Norton FC • 841096**
Simon Cook • 07825 002 298
Adam Harris • 07415 331645
adam.harris@aplan.co.uk
- **BN S&SC/Cricket Club**
Tim Gush • message [facebook: @bnssc](https://www.facebook.com/bnssc)
- **Elder Bank Hall • 622714**
Jayne Woodward
elderbankhall@gmail.com
- **Over 60's Club & Ballroom, Latin Dancing • 842373**
Joy Douglas
- **Open Gardens**
Dawn Humphris & Brian Trott
dawnhumphris@btinternet.com
brian.trott3@btinternet.com

LOCAL BUSINESSES

Simon Rhodes
Painter & Decorator
07919871523
simonarhodes@hotmail.co.uk

First Class Workmanship
Interior & Exterior Works

BTS PLASTERING
For Stunning Finishes

Ben Stevens
All aspects of plastering undertaken

Fully Qualified
07951 903185
benstevens704@gmail.com

ROD COLES GAS SERVICE

Gas Service and Installation
Heating and Plumbing
Repair and Maintenance

Based in Brize Norton
M: 07887 874 330
T: 01993 860720

ADVERTISE YOUR BUSINESS HERE!

From as little as £10 per issue...
Next issue due out Nov 2023

For an advertising pack, contact:
Jayne, Chapel Hill Design
E: jayne@chapelhilldesign.co.uk

USEFUL INFO

- **Post Office at the Sports Pavilion**
Tuesday & Thursday
9.30am – 12.30pm
- **Police (Witney) • Call 101**
10am - 6pm Monday to Friday
(Closed Saturday/Sunday)
- **NHS helpline • Call 111**
(24/7 urgent medical conditions)
- **Council Info**
The Green Party District Councillor for Brize Norton and Shilton Ward -
Councillor Rosie Pearson
rosie.pearson@westoxon.gov.uk

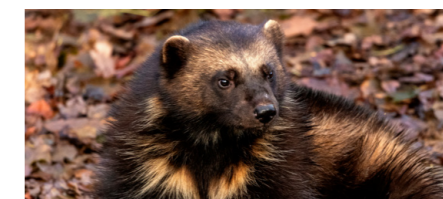
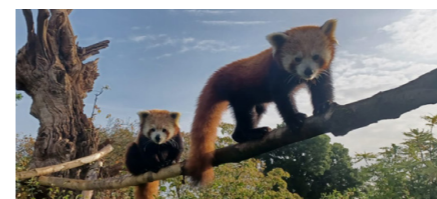
Conservative County Councillor for Burford and Carterton North East Division -
Councillor Nicholas Field-Johnson
(01993) 878309

Member of Parliament for Witney -
Robert Courts MP
robert@robertcourts.co.uk
- **Planning proposals for Brize Norton and Surrounding area**
www.westoxon.gov.uk/planning-proposals

BRIZE NORTON Breeze

BIG COMPETITION

WIN THE ADOPTION OF A RED PANDA OR A WOLVERINE* AND GET FREE ENTRY TO GO AND SAY HELLO!



JUST ANSWER THIS QUESTION... In what year did Cotswold Wildlife Park welcome its first red panda?

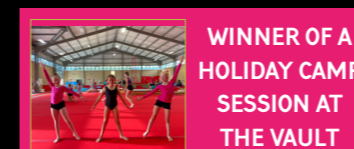
Please send your answer, along with your name and contact number to: jayne@chapelhilldesign.co.uk or call 07810 255000 and leave a message



Thank You to the team at **Cotswold Wildlife Park & Gardens** for providing the competition for this issue!

Competition rules:
*Animals Adoption to be chosen by the winner. Tickets to Cotswold Wildlife Park, Burford and are for one family (up to two adults and two children). The prize is as stated - no cash alternatives will be offered. 1 entry per household. Entry to park must be used by 30th May 2025. Competition closes on the 30th April 2024 and the winner will be drawn by the Brize Norton Parish Council on the 13th May 2024 and notified shortly after.

AND CONGRATULATIONS TO THE WINNERS OF OUR LAST TWO COMPETITIONS...



WINNER
Darcy Warburton

Please get in touch with Jayne on 07810 255000 to claim your prize



WINNER OF A FAMILY TICKET TO SEE THE CROCODILES!

ISSUE 178

WINNER
Lenny Adziman

Don't forget to go and pick up your tickets from the front desk with the family!

Brize Meadow Lodge

Luxury Care Home



ALL INCLUSIVE FEE

Start your next chapter with us

Enjoy good company in luxurious surroundings, being cared for with compassion and respect.

- ✓ Residential and Dementia Care
- ✓ Purpose Built Home
- ✓ Person-Centred Care
- ✓ All Inclusive Fee
- ✓ Daily Activities
- ✓ Nutritious Food
- ✓ Couples Welcome
- ✓ EPC "A" Rating

01993 323 313

Miles Drive, Brize Norton, OX18 1NZ
brizemeadow.lodge@idealcarehomes.co.uk | idealcarehomes.co.uk

